

## Beginners Guide to the MapPlace



**Larry D. Jones**  
MapPlace & Geoscience Databases

**Pat Desjardins**  
Corporate GIS

**Gib McArthur**  
Manager, Resource Information

**Colin Ferster**  
MapPlace Support

**Fern Wager**  
MapPlace Support

**Ward Kilby**  
is acknowledged as the early developer of MapPlace

---

---

---

---

---

---

---

---

## Workshop Agenda



- Geoscience Databases
- Introduction to GIS
- What is the MapPlace?
- Available data
- Available & Theme Maps
- Organization of Data
- **SHORT BREAK**
- Basic Tools
- Copy and Pasting Maps
- Accessing Reports
- Print and Plot Maps
- A Few Tips
- Summary
- Contents of the Next Session
- Questions and Begin Desktop Prospecting

**WITH HANDS ON EXAMPLES THROUGHOUT**

---

---

---

---

---

---

---

---

## Exercise #1 – Ministry Website

1. **Open** Internet Explorer
2. **Open** the Ministry website:

<http://www.em.gov.bc.ca>

3. **Investigate** the Links to Geoscience databases:
  - MINFILE, ARIS, RGS, COALFILE, Geology Maps
  - Mineral Titles and Mineral Stats
  - Publications

---

---

---

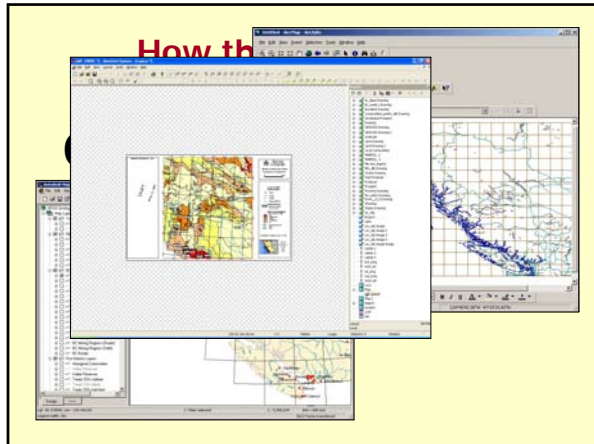
---

---

---

---

---




---

---

---

---

---

---

---

---

### Organization of Data into Layers

Each layer:

- Situated in the left side of the viewer
- Represents one entity, such as roads, forest districts, or cities
- When one or more layers are selected, they appear like a stack of transparencies and are displayed as a single map
- Toggle layers on or off; select multiple layer with Ctrl key

The image shows a close-up of a layer legend. It contains two entries: 'Lakes 1:250K (<2M)' with a checked checkbox and a blue square icon, and 'Rivers 1:250K (<2M)' with an unchecked checkbox and a blue line icon.

---

---

---

---

---

---

---

---

### Rasters and Vectors

The diagram is split into two parts by a vertical dashed line. On the left, a satellite-style image of a landscape is shown with a zoomed-in square area labeled 'Blue' and 'Green', illustrating a raster grid. On the right, a vector representation is shown with a line connecting two points labeled 'X,Y'. A small black rectangle is attached to the line, with text below it: 'Line Thickness, Name, Link, etc'.

---

---

---

---

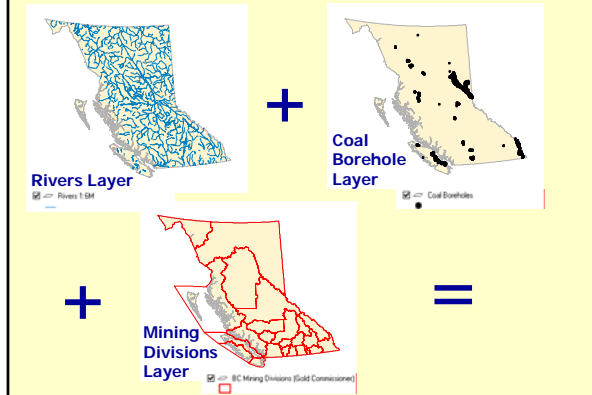
---

---

---

---

## Layers are like transparencies



---

---

---

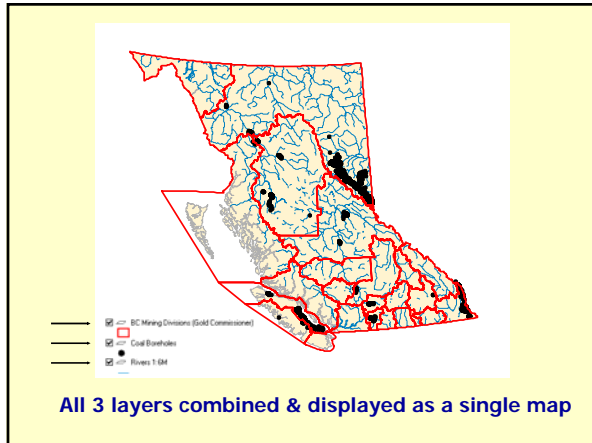
---

---

---

---

---



---

---

---

---

---

---

---

---

## Data at Different Scales



---

---

---

---

---

---

---

---

## Data at Different Scales



---

---

---

---

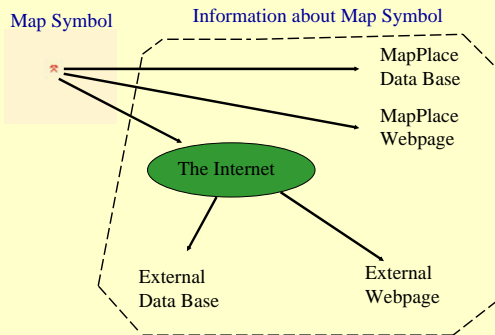
---

---

---

---

## Linking Data on the Map



---

---

---

---

---

---

---

---

## What is The MapPlace ?

[www.MapPlace.ca](http://www.MapPlace.ca)

- An **Internet-based** system that provides users access to vast amounts of **free** geospatial data through a GIS format.
- Uses Autodesk MapGuide Viewer to transform your browser into a **map viewer** which works over the Internet.
- Allows users to **interactively view, search and download** datasets.
- Allows users to **create, copy and print** their own maps and reports.
- Provides **Help Functions** and Frequently Asked Questions ([FAQs](#)).

---

---

---

---

---

---

---

---

### Available Mineral Data from the MapPlace

- The MapPlace provides access to most of BC Ministry of Energy and Mines geospatial data:
  - **Metallic and industrial mineral potential ranking**
  - **Regional silt & water geochemistry (RGS)**
  - **Bedrock & surficial geology; aggregates**
  - **Mineral & coal occurrences (MINFILE)**
  - **Assessment (ARIS) & Prospector (PAP) reports**
  - **Mineral, Placer, Coal & Petroleum Titles**
  - **Coalfields, COALFILE & Coal Assessment Reports**
  - **Publications linked to Indexes**

---

---

---

---

---

---

---

---

### Other available data

Includes:

- Administrative boundaries
- Topographic features, such as roads, rivers, and contours
- Raster images, such as digital elevation model (DEM) shaded relief, satellite (LandSat) and aeromagnetics

*All available to create user-defined maps*

---

---

---

---

---

---

---

---

### Exercise #2 – MapPlace Website

1. **Open** Internet Explorer
2. **Open** the MapPlace website:  
  
<http://www.mapplace.ca>
3. **Examine** the left hand navigation bar and the links to data

---

---

---

---

---

---

---

---

### Available Maps

- The **BCGS Geology Map** has access to all the available provincial datasets.
- The **Exploration Assistant** allows you to actively search and display elements of 5 main databases.
- The **Mineral Titles Map** displays Mineral, Placer and Coal tenures, with a lower window linked to Titles database.
- The MapPlace has **29 theme-based** maps

---

---

---

---

---

---

---

---

### 29 Theme Maps Available

- BCGS Geology Map
- Exploration Assistant
- Mineral Titles Map
- World Map
- Canada Map
- USA Map
- General BC Map
- Mineral Properties Available
- Mineral Activity Maps
- Petroleum Tenure and Wells
- Offshore Map Gallery
- Coal Map
- Hat Creek Coalfield Map
- Quesnel Geophysics
- Toadoggone Geophysics
- Regional Geophysics Map
- Relief & Radar Map
- Southeast BC Geophysics
- Geophysical Survey Table
- BC Geology Map Index
- GSC & GSB Geology Indexes
- Aggregate Potential Map
- Surficial Geology Map Index
- Digital Terrain Map Library
- Jennings River Geology
- Barkerville Geology
- Lillooet LRMP Map
- Guichon Batholith
- Vernon Geology Map

---

---

---

---

---

---

---

---

### Exercise #3 – Available Maps

1. On the MapPlace homepage, select [Available Maps](#)
2. Click on the [Selected Theme Maps](#) to review the available maps
3. Click back on your browser toolbar. Open the [BCGS Geology Map](#)
4. What is in the lower right hand corner of the screen?

---

---

---

---

---

---

---

---

## Exercise #4 – Turning Layers On and Off

1. Open the [BCGS Geology Map](#)
2. What layers are already selected?
3. Deselect or “turn off” the Lakes and Rivers 1:6M layers
4. Select or “turn on” the BC Communities Layer
5. Position your mouse pointer over some of the communities, yellow labels should appear.

---

---

---

---

---

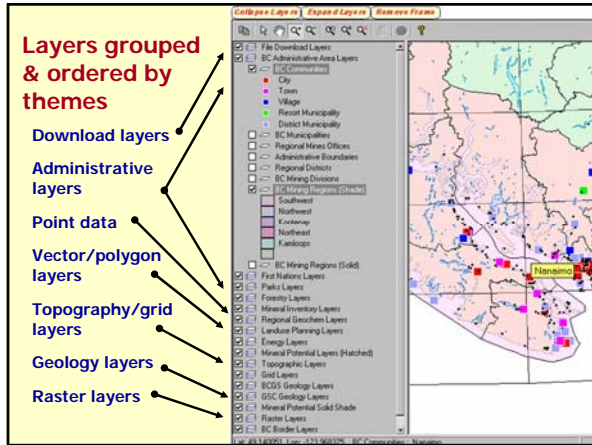
---

---

---

---

---




---

---

---

---

---

---

---

---

---

---

## Exercise #5 – Layers and Groups

1. Refresh your [BCGS Geology Map](#), by using your BROWSER REFRESH toolbar button.
2. Select or 'turn on' the MINFILE as Developed Prospect layer. What Layer Group is the MINFILE as Developed Prospect located?
3. De-select this Group. What happens to the MINFILE as Developed Prospect layer? Now turn this group back on.
4. Double click on the Group Title. What happens to the layers of this group? Try collapsing and expanding other groups.
5. Hold the Ctrl key while left clicking the layer names Volcanoes, Earthquakes and Geothermal Hotspots, release the Ctrl key and left click in one of the selected layer boxes. How many layers appear at the same time? Try this in reverse.

---

---

---

---

---

---

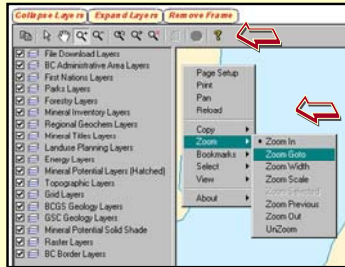
---

---

---

---

## Basic Tools



Toolbar – Across the top left side of the Viewer window

PopUp – Right click on the map

- The MapGuide Viewer uses either the **Toolbar Buttons** OR the **PopUp Menu** to carry out commands

---

---

---

---

---

---

---

---

---

---

---

---



## Toolbar Buttons

### Allows users to:

- **COPY** the current map view to the clipboard
- **SELECT** features
- **PAN** or slide the map around to display areas outside the current view
- **ZOOM** to an area that is user defined either by a centre point or a rectangle
- **ZOOM OUT** from the area defined by a centre point
- **ZOOM PREVIOUS** view that was just displayed
- **ZOOM GOTO** a specified location
- **UNZOOM** to display the full extents of the map
- **VIEW REPORTS** associated with the selected map objects
- **STOP** or interrupt the updating of the map display
- **HELP** to link to the Autodesk MapGuide Viewer Help Website

---

---

---

---

---

---

---

---

---

---

---

---

## PopUp Menu

- Appears by “**right-clicking**” the mouse button anywhere in the map window
- Selected commands by left-clicking on menu items
- Commands that have an arrow next to them (such as ZOOM) display a secondary popup menu when selected




---

---

---

---

---

---

---

---

---

---

---

---



**The Popup Menu Provides Additional Features to the Toolbar Buttons**

Additional features include:

- **ZOOM WIDTH** user-defined map width at the place of a cursor
- **ZOOM SCALE** user-defined map scale view
- **BOOKMARKS** to add & delete bookmark names for displayed map views
- **SELECT** criteria, such as **OBJECTS, RADIUS, POLYGON,** & **WITHIN** specified map objects
- **VIEW DISTANCE** between two or more locations; & **BUFFERS** allows users to create their own buffers around selected objects
- **ABOUT PREFERENCES** allows users to choose the type of map units (Metric or USA units) & coordinate system (latitude & longitude or mapping coordinate system) to be displayed on the map

---

---

---

---

---

---

---

---

**Exercise #6 – Basic Tools**

1. **Refresh** your [BCGS Geology Map](#), by using your BROWSER REFRESH toolbar button.
2. Right click on the map and click **About → Preferences**, select METRIC from the Map Units menu and click OK.
3. Use the **Zoom GoTo** feature and select BC Locality under the CATEGORY drop down menu, Enter Nanaimo under LOCATION and 30km under ZOOM TO WIDTH. Select Nanaimo as the location in the pop-up box.
4. **Now** select the BC Communities layer to see Nanaimo (located in the centre of your screen)
5. **Experiment** with **ZOOM** and **PAN** tools

---

---

---

---

---

---

---

---

**Exercise #7 – Copy and Paste**

1. Now try **adding layers** to create a personalized map: NASA landsat, roads, Indian Reserves and Rivers with Fisheries Report.
2. Click the **copy** button on the toolbar menu
3. Open a new document in Microsoft **PowerPoint**
4. Select **paste** under the Edit menu
5. You can now add more features or further **edit** your personalized map

---

---

---

---

---

---

---

---

### Exercise #8 – Accessing Linked Reports

1. **Refresh** your [BCGS Geology Map](#), by using your BROWSER REFRESH toolbar button.
2. **Use** the **Zoom GoTo** feature and enter 082F for '1:250K NTS Map'; width not required. Press OK.
3. **Turn on** 'ARIS reports by year' layer.
4. **Turn on** 'Grid 1:50K maps–polygons' and 'Grid 1:50K maps–labels'; Select 082F/06; **Zoom Selected. Select clear.** Turn off 'Grid 1:50K maps–labels'.
5. **Turn on** 'Grid 1:20K maps–polygons' and 'Grid 1:20K maps–labels'; Select 082F.044.
6. **Select within existing polygon** chose 'ARIS reports by year'. The View Report toolbar button will appear active, click on it. A window will appear click on ARIS linked report. Scroll to the bottom and select 26356.

---

---

---

---

---

---

---

---

### Exercise #9 – Print and Plot

1. Select the Nanaimo area with the **Zoom** tool
2. Turn on some **layers**: DEM hillshade with parks, lakes, rivers, contours, BC communities and roads.
3. Right-click in the map, and select **Page Setup** from the pop-up menu. You can choose to include a title, a legend, the map's scale, a North arrow, the map's URL, and the current date and time within the Page Setup dialog box.
4. You can specify the **scale** of the map you want to print, or you can have MapGuide automatically scale the map to fit the printed page
5. Now choose **Print** from the pop-up menu to print your map

---

---

---

---

---

---

---

---

### Exercise #10 – Exploring the Layers

1. **Now** let's take a closer look at all of the available layers.
2. **Zoom** into the Nanaimo area again.
3. **Start** at the bottom of the layer list and work your way upwards selecting layers and deselecting layers as the map becomes cluttered.

---

---

---

---

---

---

---

---

## A Few Tips

---

---

---

---

---

---

---

---

### Tip #1

- Consult the [Frequently Asked Questions](#) (FAQ) on the MapPlace. You will probably find your question answered here.

*Now check it out!*

1. Go to the MapPlace home page
2. Open [Frequently Asked Questions](#) link
3. Browse through some of the questions

---

---

---

---

---

---

---

---

### Tip #2

- Consult the [First Time Users Guide](#) on the MapPlace. You will find more online help and documents to assist you.

*Now check it out!*

1. Go to the MapPlace home page
2. Open the [First Time Users...](#) link
3. Browse through some of the links

---

---

---

---

---

---

---

---

### Tip #3

If you are going to ZOOM IN to an area, downloading time can be reduced if you turn on the desired layers after ZOOMING into an area.

The same idea applies when you ZOOM OUT of an area. Except this time turn off the layers before you ZOOM OUT.

---

---

---

---

---

---

---

---

### Summary

➤ In this workshop you have completed the following functions:

- Aware of available maps & data
- Used the ZOOM features
- Experimented with other tools
- Created and copied maps
- Accessed linked reports
- Got frustrated and lost
- Printed files
- Found solutions
- Could not believe the amount of data available

*And much more!*

---

---

---

---

---

---

---

---

### Learn More in the Next Workshop, Intermediate MapPlace:

- Use geochemical, geophysical and geology layers to generate exploration targets
- Identify new exploration targets before you map select your cells in Mineral Titles Online (MTO)
- Create buffers
- Measure distances
- Use Exploration Assistant

*And much more!*

---

---

---

---

---

---

---

---

**Questions??**

*Now you are ready to begin  
Desktop Prospecting!*

---

---

---

---

---

---

---

---



Thank you for your time!

---

---

---

---

---

---

---

---