

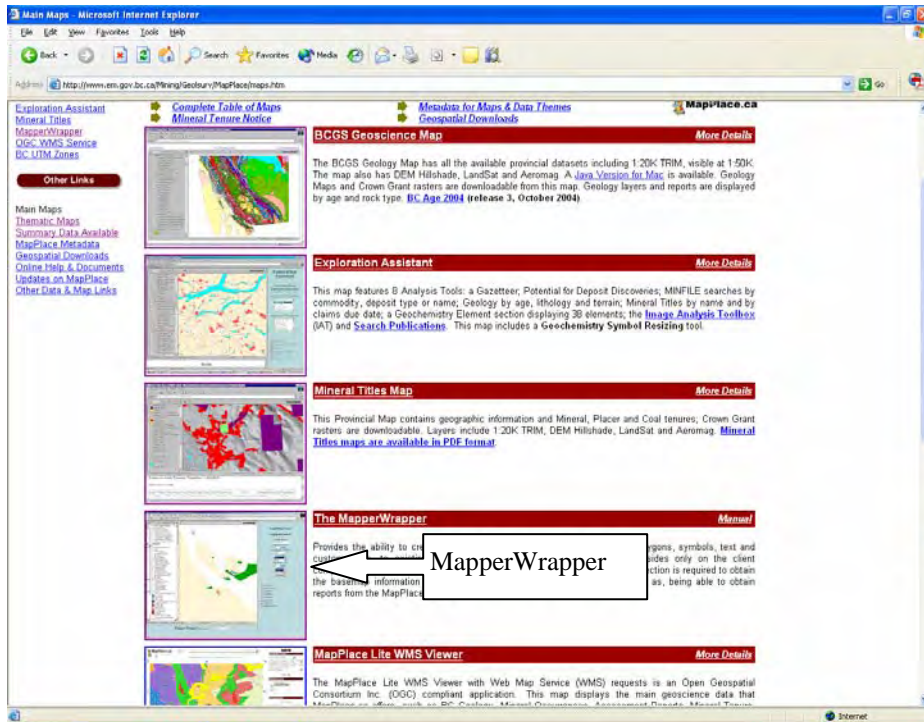
Buffer – Data capture exercise:

Exercise 4

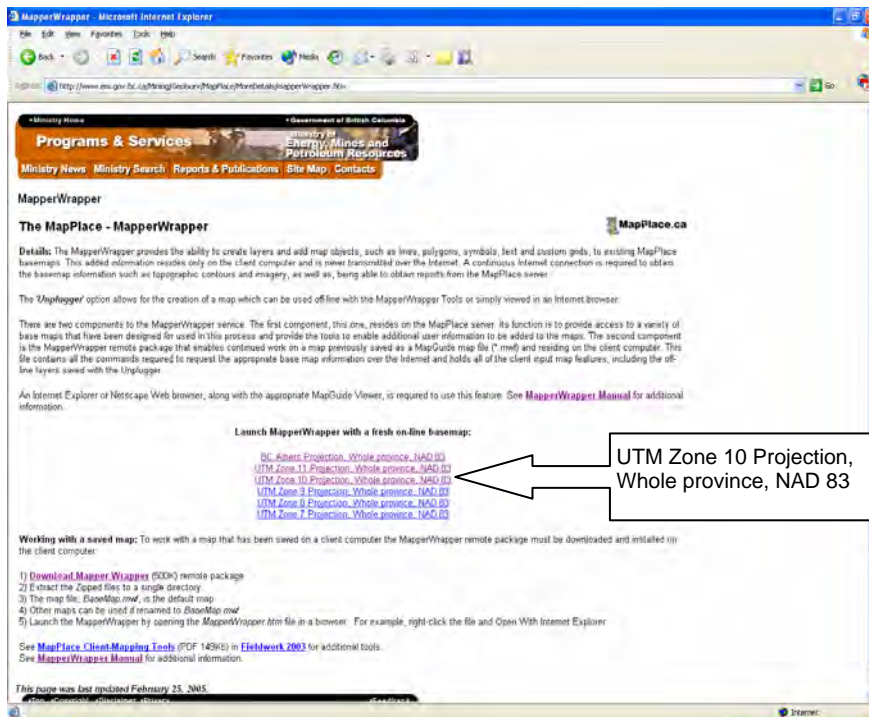
This example demonstrates some available **navigation tools** to locate an area of interest and apply some **analysis tools** to the area. The area of interest is the Baldy Batholith near Little Fort.

Step 1: Launch MapperWrapper

Click on 'Main Maps' on MapPlace home page. Main maps are shown with their title and image such as BCGS Geoscience Map. Open map theme MapperWrapper (fourth map down).



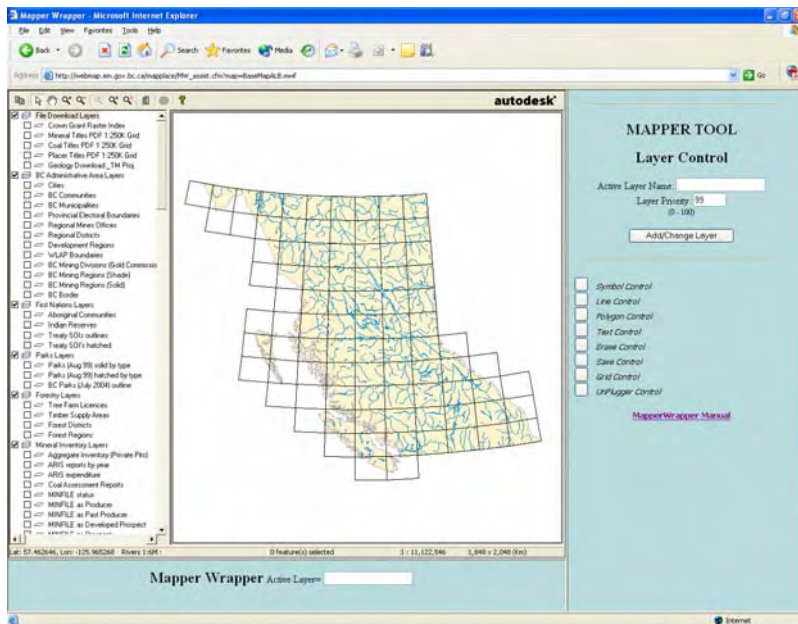
Place cursor over image and click.



Launch MapperWrapper with an on-line basemap, UTM Zone 10 Projection Whole province, NAD83

The MapperWrapper provides the ability to create layers and add map objects, such as lines, polygons, symbols, text and custom grids, to existing MapPlace basemaps. This added information resides only on the client computer and is never transmitted over the Internet. A continuous Internet connection is required to obtain the basemap information such as topographic contours and imagery, as well as, being able to obtain reports from the MapPlace server.

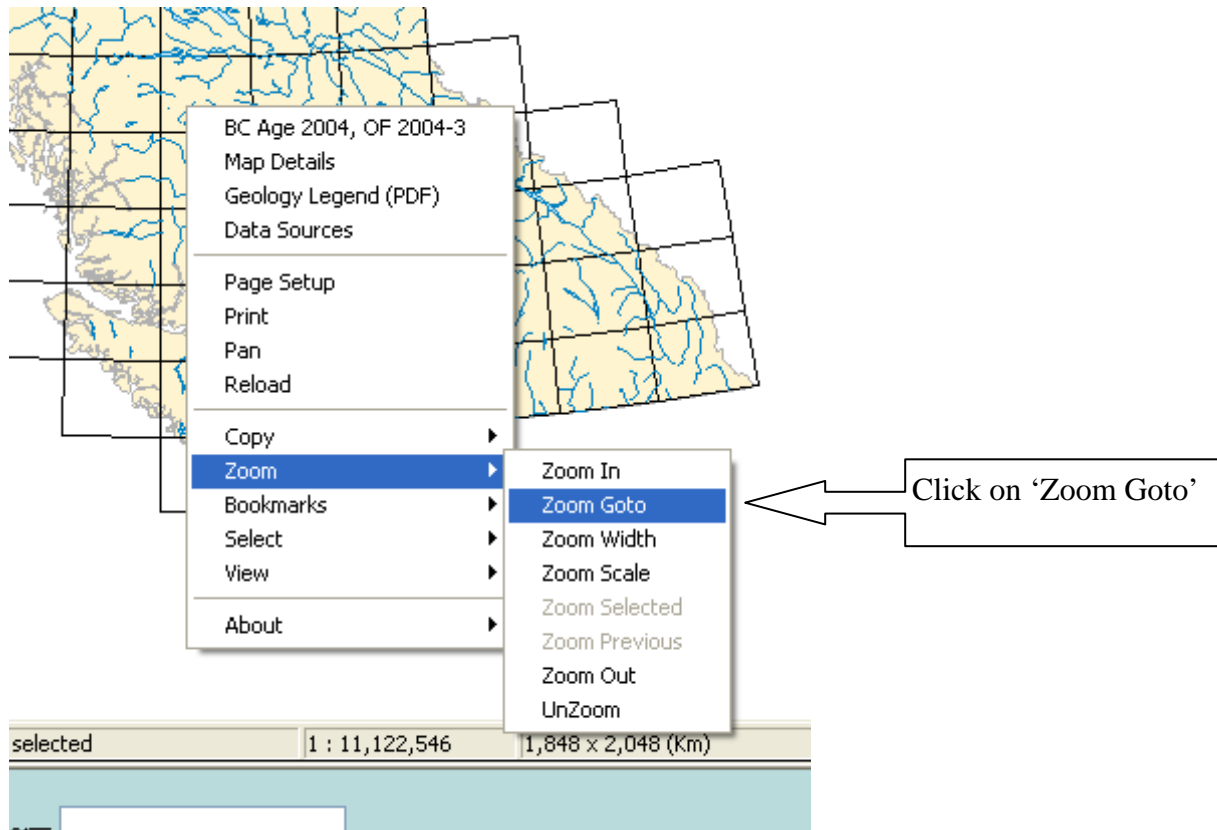
The '*Unplugged*' option allows for the creation of a map which can be used off-line with the MapperWrapper Tools or simply viewed in an Internet browser.



On the right legend are tools to add or change a layer and add points, lines, polygons and text features to a created layer. The left legend shows the layers available from the MapPlace server.

Step 2. Navigate to the Baldy Batholith.

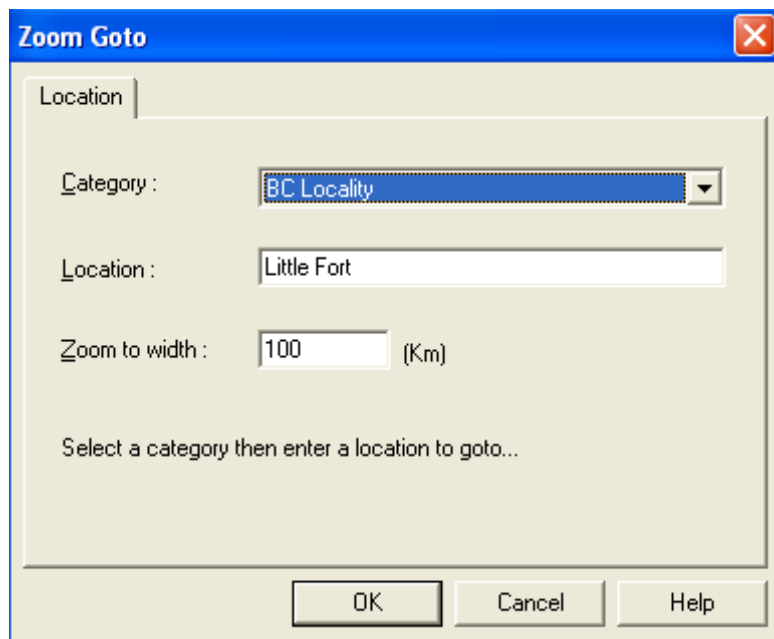
First place the cursor anywhere in the map window and right click. A menu will popup:



Click on 'Zoom Goto'

The Zoom Goto menu appears.

In the Category window click on the down arrow and select 'BC Locality'. Type in 'Little Fort' in the Location window and in 'Zoom to width' window type '100'.



Now click the 'OK' to zoom into the Little Fort area with a window width of 100 kilometres. Now turn on layers:

BC Communities

ARIS reports by year

MINFILE Status

Roads 1:250K

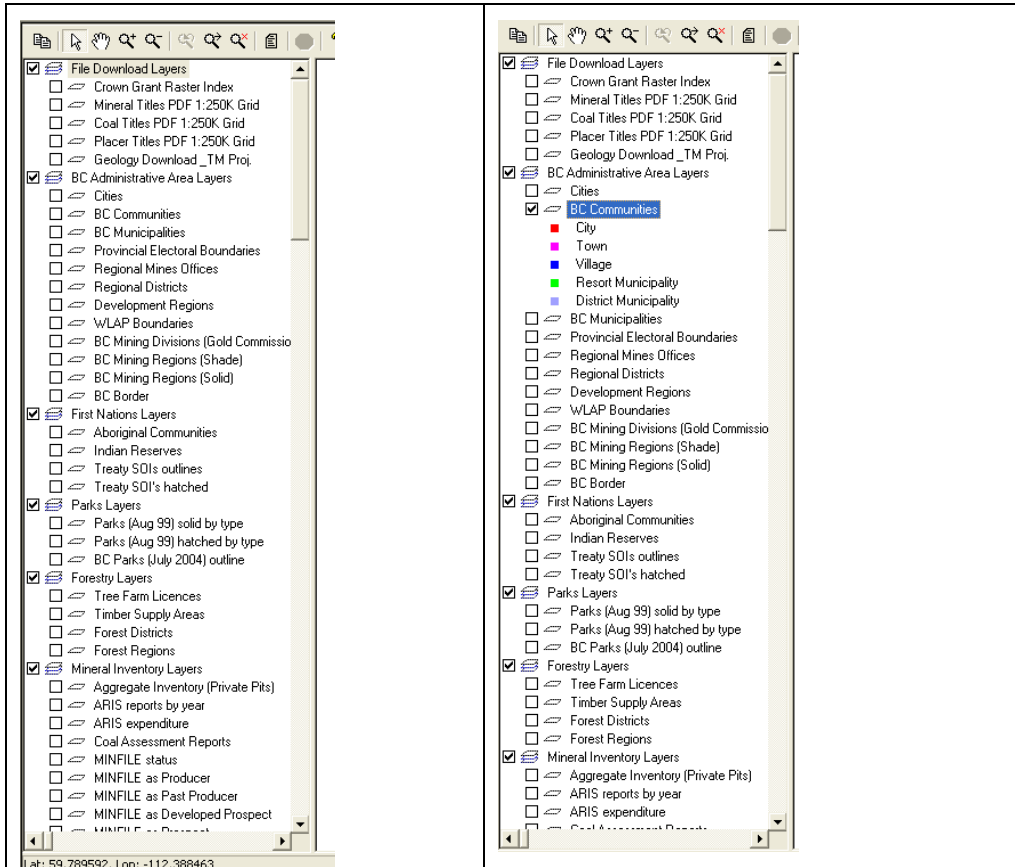
Rivers 1:250K

Lakes 1:250K

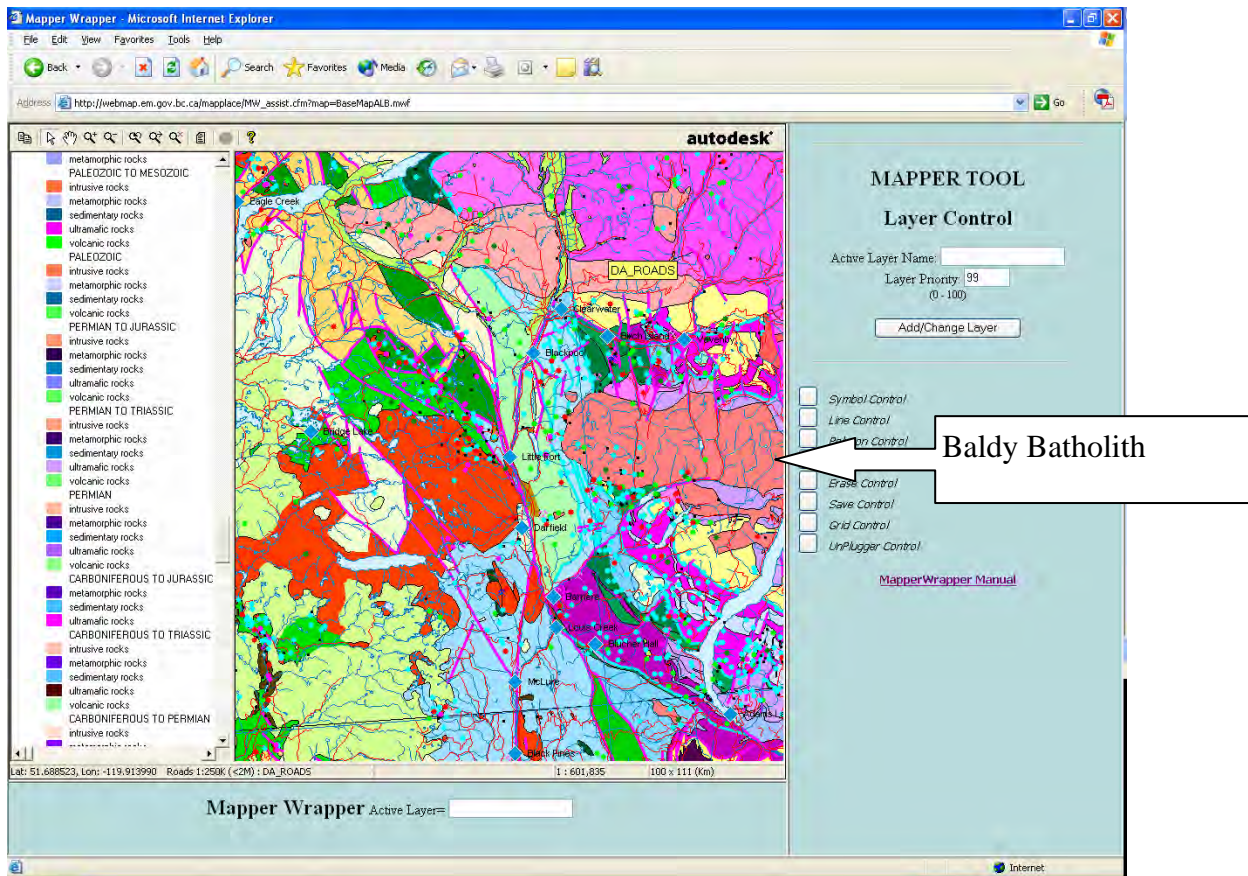
Contacts & Faults

Bedrock geology - by age and rock class

Layers to turn on or off are located in the left legend. Simply click the box that is to the left of the layer name. Below under the BC Administrative Area Layers group examples show BC Communities layer off (unclicked) and on (clicked).



Tip: Reduce downloading time by turning on the desired layers after **ZOOMING** into an area. The same idea applies when you **ZOOM OUT** of an area. Except this time turn off the layers before you **ZOOM OUT**.

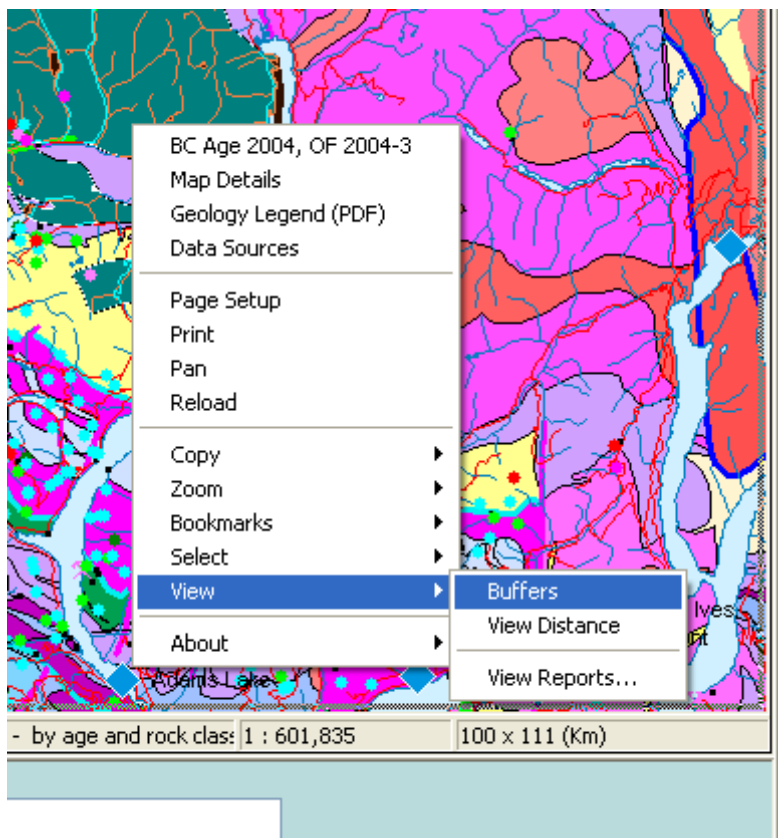


Use the 'Pan' tool  to move the Baldy Batholith to the center of the map window.

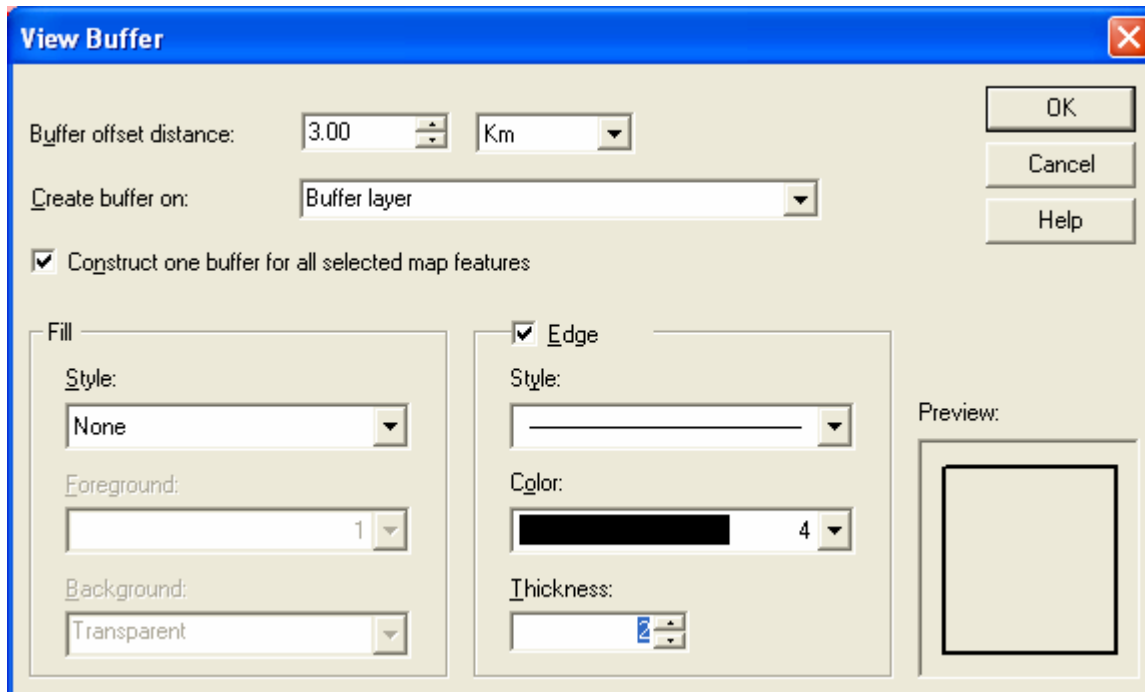
Step 3: Create a buffer

Create a 3 kilometre buffer around the Baldy Batholith.

First select the batholith then right click to access the popup menu. Highlight view buffers.



Click on **'Buffers'**



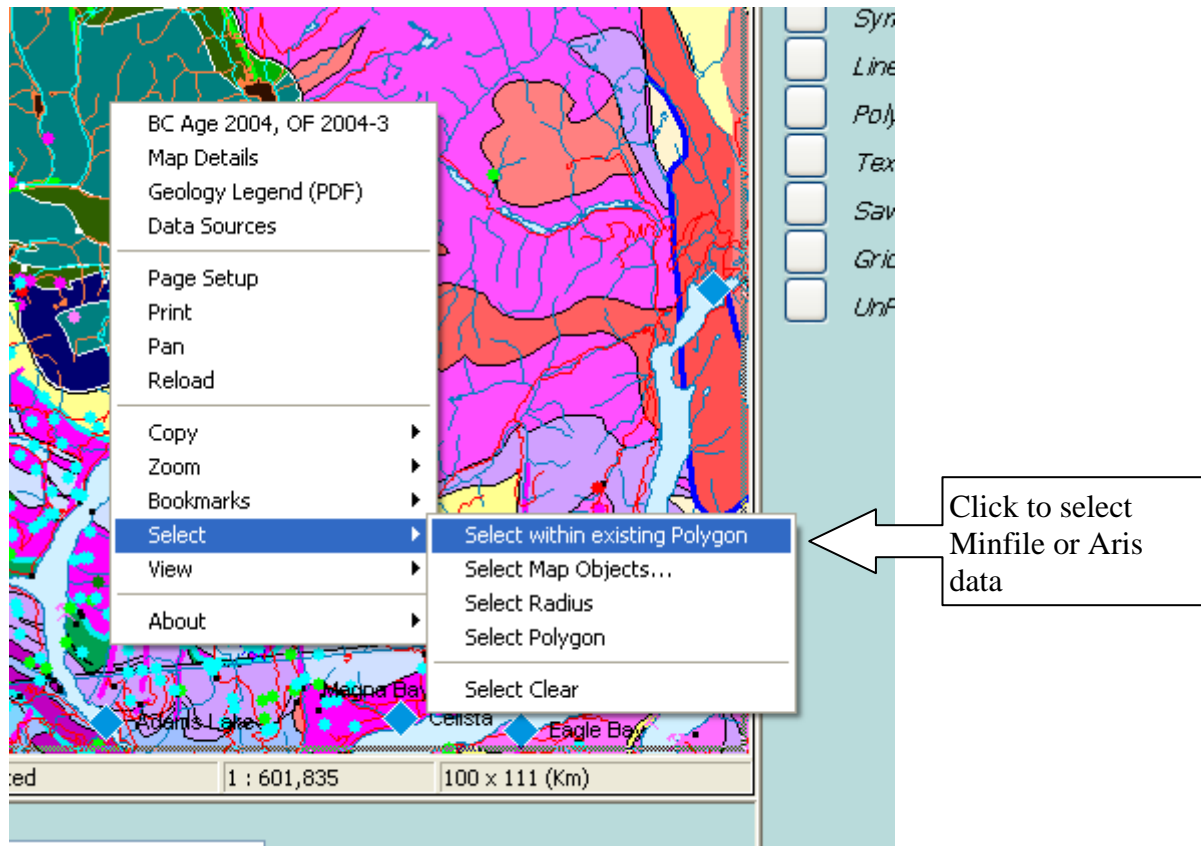
Within the 'View Buffer' menu increase the 'Buffer offset distance' from 1.00 to 3.00 and ensure it is set to 'Km'. 'Construct one buffer for all selected map features' should be checked. Increase the 'Thickness' from 1 to 2. Now click the 'OK' button.

A buffer layer is now created and is located below the BCGS Geology Layers 2005 group and above the GSC Geology Layers.

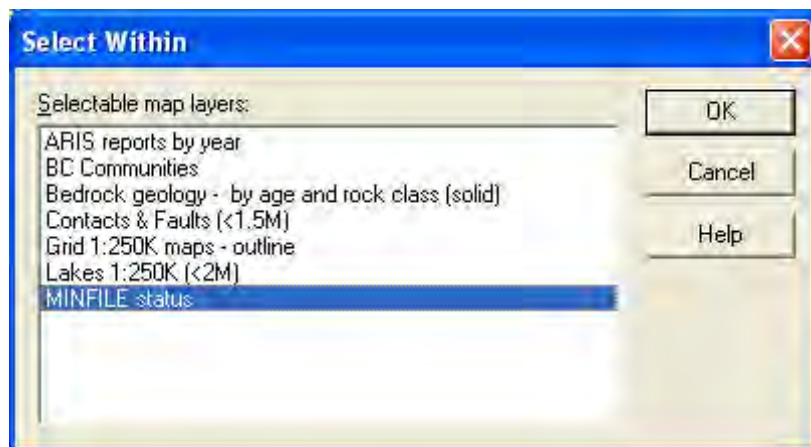
Tip: If you are not happy with the buffer offset distance selected and you can change it. First on the right legend select Layer control if not already selected and type in 'Buffer layer' in the 'Active Layer Name' window. Click the 'Add/Change Layer' button. Now select the 'Erase Control' button. Click the 'DELETE MAPLAYER' button and watch the buffer disappear!

Step 4: Use the buffer to select MINFILE and ARIS data.

Select the buffer area by placing the cursor within the buffer and left click the mouse. Now right click and highlight the 'Select within existing polygon'

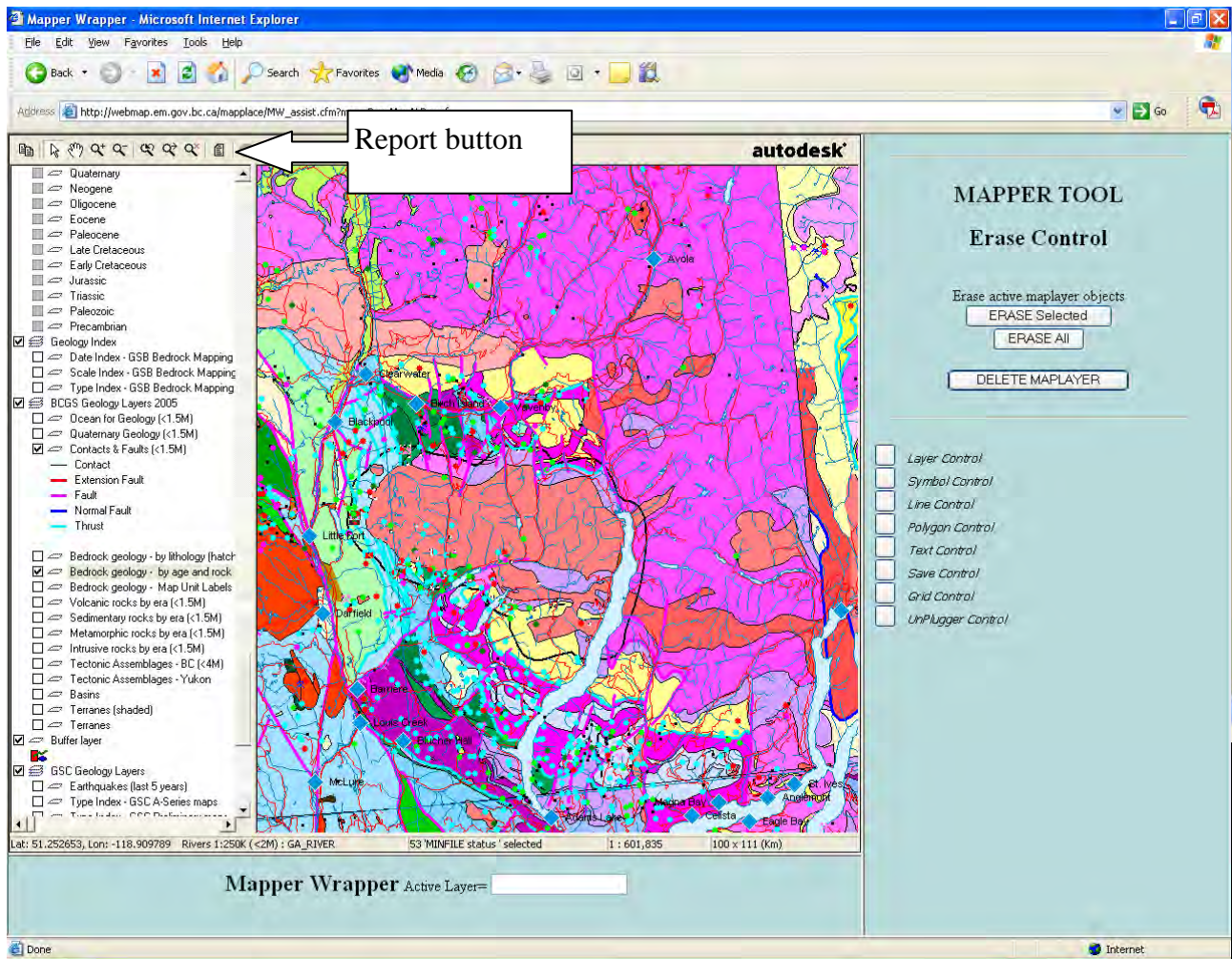


Click to select MINFILE and ARIS data

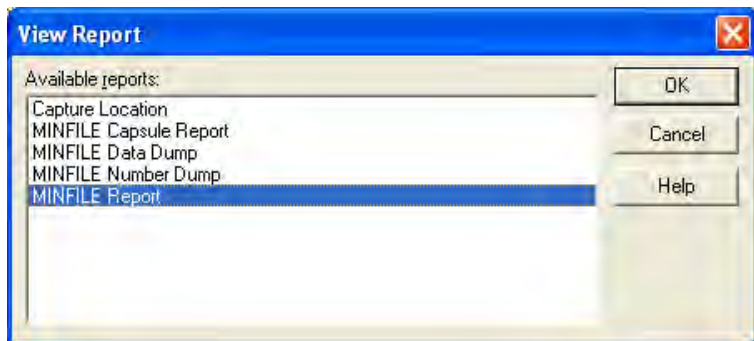


All the points within the buffer polygon which includes points within the Baldy Batholith are selected.

In the 'Select Within' window highlight 'MINFILE Status' and click 'OK'.



Click the report button



Select the 'MINFILE Report' and click 'OK'

MINFILE Report - Microsoft Internet Explorer

Address: <http://webmap.em.gov.bc.ca/mapplace/minpot/minfile.cfm>

MINFILE Report

Click on MINFILE Number [link](#) for more details!
Click on [Commodities](#) or [Deposit Type](#) label for definitions

MINFILE No.	Name	Status	Commodities	Deposit Type	Latitude	Longitude
082M 008	FH.LYDIA	Prospect	CU AG	G06	51 31 25	119 55 04
082M 010	BEX.ZONE.RAN	Prospect	CU		51 17 40	119 43 44
082M 026	BIRMOLY.JANE	Showing	MO	L05	51 22 50	119 57 04
082M 029	FOGHORN.GOPHER	Past Producer	AG PB ZN CU AU		51 32 05	119 57 14
082M 040	CHIDGRIN.FOGHORN	Showing	AG PB ZN CU AU	I05	51 32 20	119 57 14
082M 041	KELLY'S	Showing	PB ZN	I05	51 31 20	119 56 44
082M 049	GRIZZLY	Showing	CU AG ZN MO AU	I05	51 17 40	119 44 59
082M 050	RENNING	Showing	AG ZN CU PB	I05	51 17 20	119 45 34
082M 051	EBL.REM.EB.MCLELLAN	Prospect	CU PB ZN AG AU MO	G06	51 19 50	119 46 24
082M 052	H	Showing	MO	L03	51 22 30	119 51 24
082M 059	CC.C.C	Showing	ZN PB AG CU	G06	51 19 30	119 54 14
082M 060	HARPER.ULTIMA.LUCKY BOY.WAH WAH.NB	Prospect	CU ZN PB AG AU	G06	51 20 30	119 51 34
082M 062	BAR.BARRIERE.TONY	Showing	MO	L05	51 23 50	119 51 54
082M 063	SITTING BULL	Showing	CU AG AU	I05.G06	51 20 40	119 53 04
082M 064	NORTH STAR (NORTH SHOWING).ACE.ENERGITE	Showing	PB ZN AG CU	I05	51 21 15	119 59 44
082M 065	ENERGITE.ENARGITE.NORTH STAR (SOUTH SHOWING)	Past Producer	PB AG ZN CU AU	I05	51 21 00	119 59 34
082M 067	ANACONDA.LYNX.IRON CAP.OK.LAVERNE KP5	Showing	CU PB ZN AG AU	G06	51 19 45	119 55 04
082M 070	FORTUNA 2	Showing	PB ZN CU AG AU	I05	51 21 30	119 57 44
082M 071	KUNO	Showing	PB AG AU	I05	51 22 10	119 56 44
082M 072	FORTUNA 1 KIDZICKS	Showing	PB AG ZN CU AU	I05	51 20 40	119 56 24
082M 073	KUNIGUNDE	Showing	PB AG	I05	51 22 30	119 54 44
082M 074	MAFALDA	Showing	PB AG	I05	51 22 50	119 54 44
082M 108	FOGGY 3	Prospect	AG PB ZN CU AU	G06.I05	51 31 50	119 57 54
082M 109	VM	Showing	CU	I05	51 30 50	119 43 54
082M 110	B & B.NLSS.LESLY	Showing	CU	G06	51 19 50	119 49 34
082M 112	VAL	Showing	MO	L05	51 22 20	119 52 24
082M 114	HILLTOP.LUCKY STRIKE	Prospect	CU		51 29 00	119 38 29
082M 115	HILLTOP 9	Showing	CU	K01	51 29 07	119 37 04
082M 117	FENNELL.ZONE.BEX	Showing	CU AU MO NI		51 17 10	119 44 19
082M 127	NSP	Showing	CU		51 17 20	119 37 14
082M 130	BROKEN RIDGE	Showing	CU PB ZN AG	G06	51 20 30	119 53 04
082M 131	MAY	Showing	CU PB ZN AG	G06	51 20 15	119 53 24

Click on a MINFILE number to view MINFILE details.

Definitions of deposit types can be viewed by clicking on a deposit type label.

MINFILE Mineral Inventory - Microsoft Internet Explorer

Address: <http://www.em.gov.bc.ca/Mining/Geosurv/Minfile/App/Summary.aspx?minfile=092P++040>

Ministry Home | Government of British Columbia
Programs & Services
 Ministry of Energy, Mines and Petroleum Resources

Ministry News | Ministry Search | Reports & Publications | Site Map | Contacts

MINFILE Home page | ARIS Home page

MINFILE Record Summary
 MINFILE No: 092P 040

Inventory Report

Print Preview | PDF | -- SELECT REPORT -- | New Window

SUMMARY Summary Help

Name	SWEET HOME (L.3844)	Mining Division	Kamloops
Status	Past Producer	BCGS Map	
Latitude	51° 26' 05" N	NTS Map	092P08E
Longitude	120° 05' 25" W	UTM	10 (NAD 83)
Commodities	Gold, Copper, Bismuth	Northing	5702186
Tectonic Belt	Omineca	Easting	702241
Capule		Deposit Types	105 : Polymetallic veins Ag-Pb-Zn+/-Au
Geology		Terrane	Slide Mountain

The Sweet Home vein showing is similar to the Windpass deposit (092P 039) located 1000 metres to the north. Mineralization is in gold-bearing quartz veins which cut the Devonian to Permian Fennell Formation of the Slide Mountain Group. Both the Windpass and Sweet Home veins dip at variable angles (35 degrees) to the north and cut the western margin of a steeply west-dipping diorite sill and an adjacent bedded chert horizon within the lower Fennell Formation, directly east of the upper Fennell contact.

The Sweet Home vein strikes 290 degrees with varying dips from 10 to 50 degrees north but averages 30 degrees. Within the chert which forms the western wall of the diorite sill, the vein is only centimetres wide and has little sulphide and low gold values. From here, it extends 152 metres to the east where it is thought to be truncated by a northwest-trending fault. It is not known if an offset continuation exists. The Sweet Home vein is comprised of quartz with variable but minor amounts of pyrite and chalcopyrite, bismuth sulphide and telluride in small amounts.

The Windpass showings (092P 039) were discovered and staked in 1916 by Olie Johnson, T.H. Campbell and Oscar Hergen. During subsequent years small shipments of high-grade ore were made from shallow workings. The property was bonded late in 1922 to the Trites, Woods & Wilson interests of Fernie, who incorporated Windpass Gold Mining Company, Limited in January 1923. The Sweet Home vein was discovered and staked at about the same time. Ore shipments from the Sweet Home workings began in 1935; production statistics are not available. The Sweet Home vein was developed by a 36 metre inclined shaft (30 degrees) which connects with a 106 metre crosscut adit, and 137 metres of drift in the footwall of the vein. In 1969, Kamad Silver Co. Ltd. purchased a lease on the Windpass and Sweet Home claims from J.F.V. Millar, of Calgary. A magnetometer survey and limited trenching were carried out. In April 1972, Kamad optioned the property to Dalton Resources Ltd. Work during the year included magnetometer and VLF-EM surveys over 21.8 kilometres, stripping and about 152 metres of drilling. Surveying and sampling of the Windpass and Sweet Home dumps indicated 32,655 tonnes at 6.99 grams per tonne gold and 16,146 tonnes at 0.68 gram per tonne gold, respectively (Sookchohoff, April 1973, see Windpass, 092P 039).

Bibliography

- EMPR AR 1923-A182; 1926-A187; 1934-D26; 1935-D14; 1937-D30; 1938-D35, D36; 1961-49
- EMPR ASS RPT 329, [4261](#), [18764](#)
- EMPR BULL 20 Part III, p. 27
- EMPR GEM 1973-273
- EMPR FIELDWORK 1980, pp. 159-164
- EMPR MINE FICHE #61649 (Underground assay plan)
- GSC MAP 1278A
- GSC SUM RPT 1921 Part A, p. 100
- GCNL Aug.30, 1973

•Top •Copyright •Disclaimer •Privacy •Feedback

One component of information from the MINFILE report is the Bibliography. Some of the Ministry's information has been scanned and is available online.

Step 5: View a scanned PUBLICATION

Open another Internet Explorer session and go to the MapPlace home page. Under 'Other Links' on the left click on 'Publications Catalogue'.

The screenshot shows the 'Publications Catalogue' page. The 'Publication Products' section includes the following items:

- Geological Fieldwork - A Summary of Fieldwork and Current Research (entire series available digitally)
- Annual Reports of the Ministry 1973 - 2000 (entire series available digitally)
- Exploration and Mining in British Columbia
- Mineral Exploration Reviews
- Bulletins Post 1940 Pre 1940 Miscellaneous
- Papers
- Open Files
- GeoFiles (digital versions only)
- Maps: General Preliminary Geoscience Mineral Potential Digital Geology
- Information Circulars
- Miscellaneous Publications

The 'Database Products' section includes:

- MapPlace - see BC Geology Map Index Details
- Bedrock Mapping Index (includes Geological Maps Online)
- MINFILE - B.C. Mineral Occurrences
- ARIS - R.I.C. Assessment Reports
- COGEMFILE - Coal occurrences in BC
- Mineral Deposit Profiles
- Presenty File
- Regional Geochemical Survey (RGS)

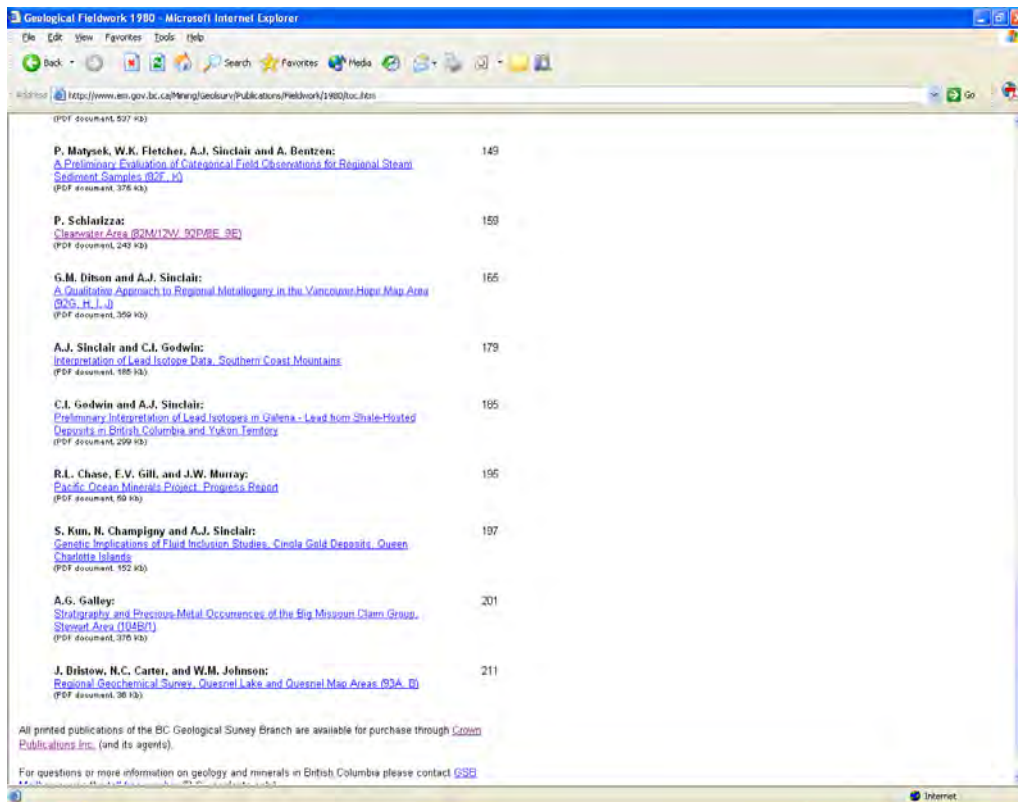
One publication listed in the MINFILE bibliography for the SWEET HOME past producer is 'EMPR Fieldwork 1980 159-164'.

To investigate this publication, under the 'Publication Products:' heading click on 'Geological Fieldwork - A Summary of Fieldwork and Current Research'

The 'Fieldwork' page contains the following table:

Series #	Title	Stock Code	Price
1975-2	Geological Fieldwork 1974	OP	
1976-1	Geological Fieldwork 1975	2112	5.40
1977-1	Geological Fieldwork 1976	2113	5.40
1978-1	Geological Fieldwork 1977	OP	
1979-1	Geological Fieldwork 1978	2118	5.40
1980-1	Geological Fieldwork 1979	2122	5.40
1981-1	Geological Fieldwork 1980	2131	5.40
1982-1	Geological Fieldwork 1981	2135	5.40
1983-1	Geological Fieldwork 1982	OP	
1984-1	Geological Fieldwork 1983	2140	5.40
1985-1	Geological Fieldwork 1984	OP	
1986-1	Geological Fieldwork 1985	073	5.65
1987-1	Geological Fieldwork 1986	OP	

Click on 'Geological Fieldwork 1980' to access the 'Geological Fieldwork 1980' page. The right column is 'Project Geology' and the left column is 'Page'. Scroll down to 159 under the 'Page' column.



The fieldwork project for the area around MINFILE SWEET HOME is the 'Clearwater Area', mapped by Paul Schiarizza. A PDF file of the fieldwork article is accessed by clicking on the fieldwork name.

Step 6: Export captured data to excel

Click the 'report' button, select 'minfile data dump'. Save to a directory (note rename extension to 'txt'). Open excel, select file and import it.

Questions?