

# ARIS MapBuilder and MapBuilder

## Exercise 9a:

### ARIS MapBuilder

The **ARIS MapBuilder** can be used to quickly produce maps to partially fulfill assessment reporting requirements.

**Note:** MTO tenures (numbers 500000 and above) may mask older tenures and Crown grants, which may still be valid. Thus MTO tenure outlines may have to be adjusted to exclude these areas. The [MapBuilder Map](#) can be used to custom annotate claim boundaries.

Enter your property name and all associated Tenure ID Numbers (separated by commas) in the form below and submit to produce location and claim maps of your property. A Tenure Report button creates a list of tenures on the property with links to details in Mineral Titles Online. The resultant index map of the property, the claim map ([sample](#)) and a list of all the claims can then be included in an assessment report. The site also creates a Keyhole Markup Language (KML) file to show claims in viewers such as Google Earth.



#### Step 1: The Data Entry Form

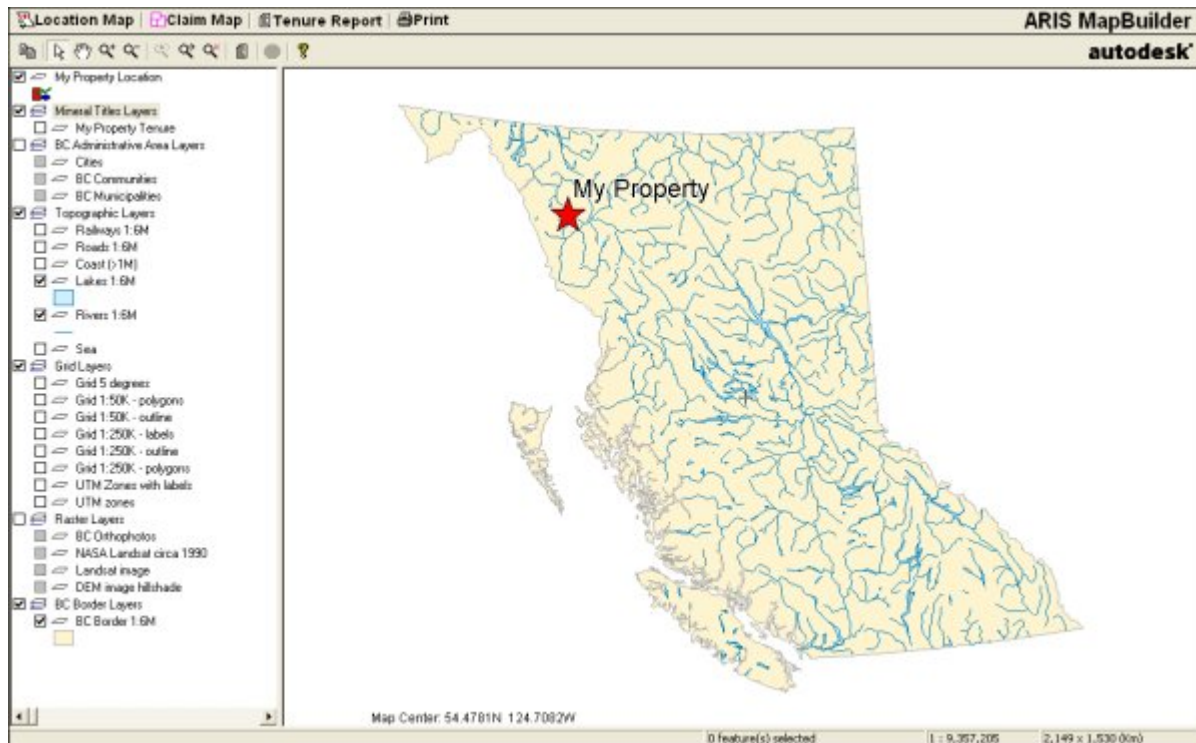
- ▶ Enter the name of your property.
- ▶ Enter all Tenure ID Numbers for your property. Separate the ID numbers by commas.
- ▶ Press the button.

**Property Name:**

**Tenure ID Numbers:**

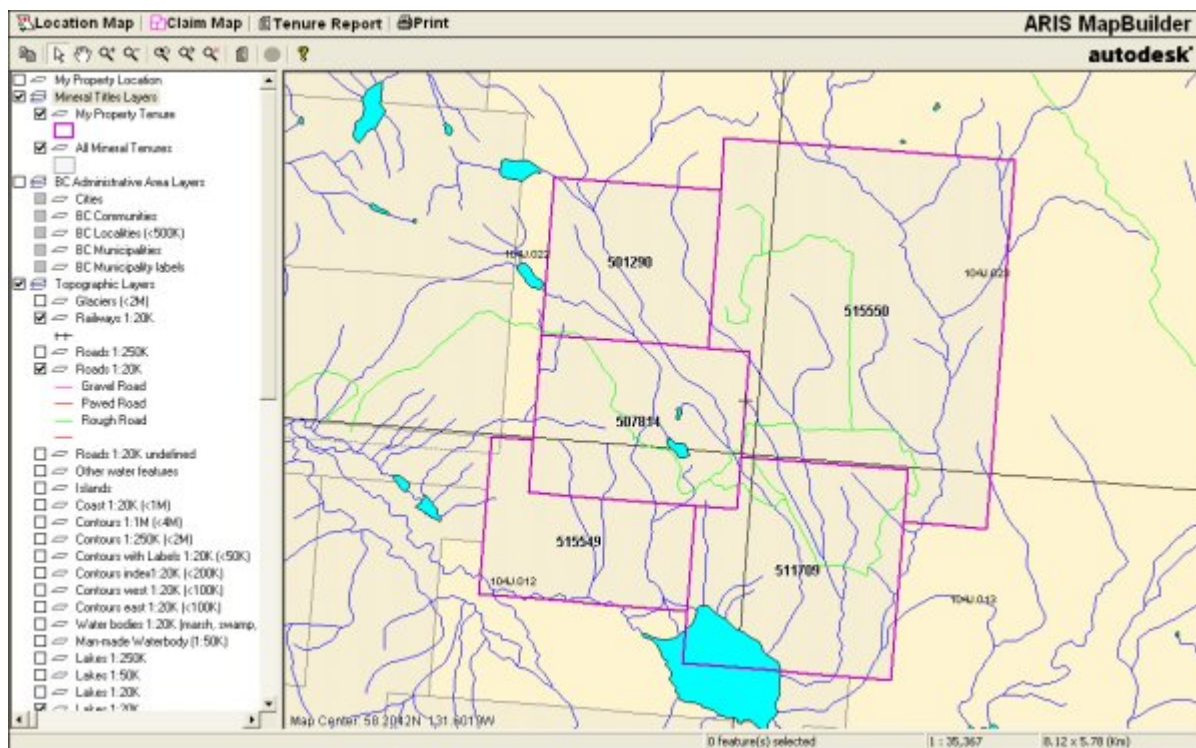
#### Step 2: The Location Map

- ▶ The map opens and displays your property's location.
- ▶ Clicking  **Claim Map** will zoom in to your property.
- ▶ Clicking  **Print** will print your Location Map. [PDF Sample](#)




### Step 3: The Claim Map

- The map zooms in to show your property.
- Clicking **Location Map** will zoom out to the Location Map.
- Clicking **Print** will print your Claim Map. [PDF Sample](#)



#### Step 4: The Tenure Report

- Clicking  **Tenure Report** will open a new window with a report of all tenures in your property.
- The Tenure Report provides links to [MTO](#)

## Mineral Titles Online Report

*Click on Tenure Number for more information*

[Download to Excel](#)

<a href="#">Tenure Number</a>	Type	Claim Name	Good Until	Area (ha)
<a href="#">501290</a>	Mineral	HAT	20070112	204.528
<a href="#">507814</a>	Mineral		20060930	255.738
<a href="#">511709</a>	Mineral		20060930	324.014
<a href="#">515549</a>	Mineral		20060930	187.587
<a href="#">515550</a>	Mineral		20060930	715.865


[LIBC Metadata](#)

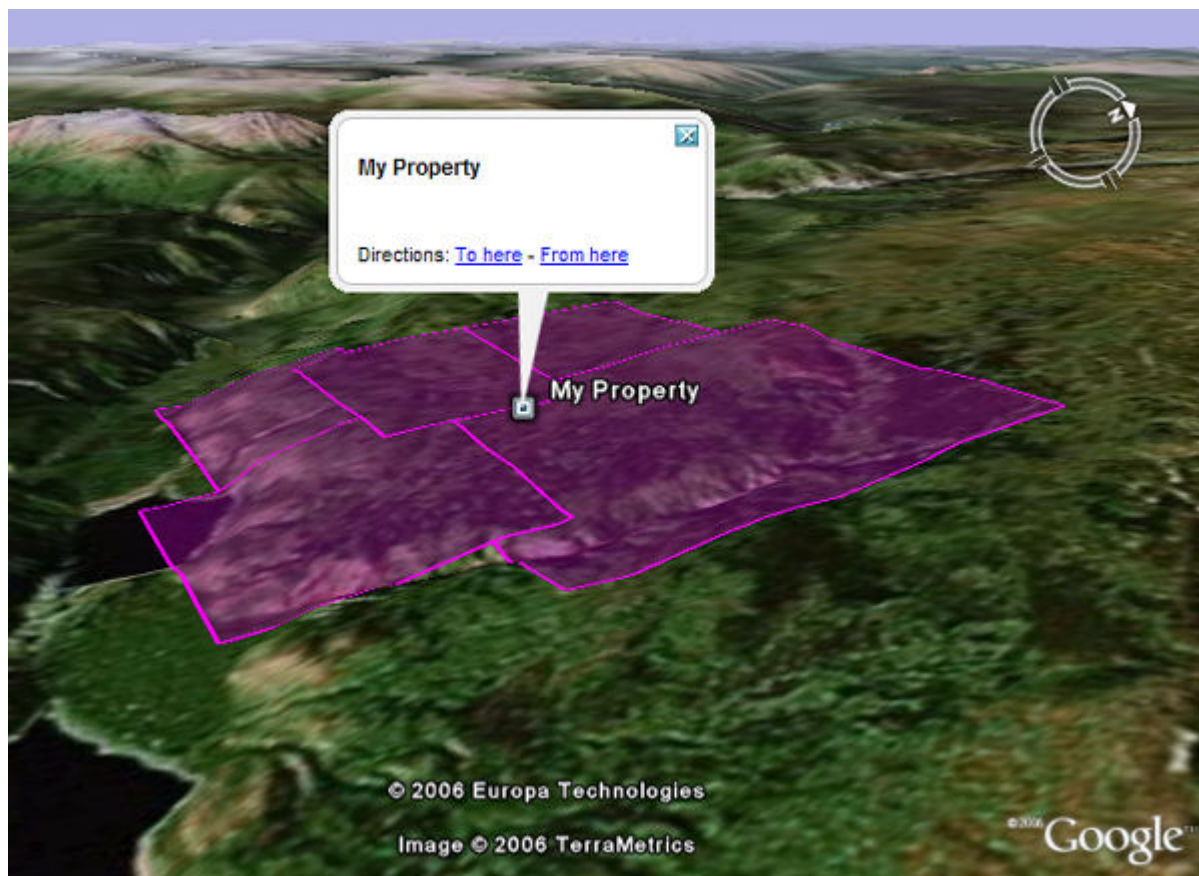
[Mineral Title Online](#)

[BC Geological Survey](#)

[British Columbia Ministry of Energy, Mines and Petroleum Resources](#)

#### Step 5: View your claims in Google Earth

- Clicking  **Google Earth** will download a Google Earth **KML** file.
- You must have [Google Earth](#) installed on your computer to view KML files.



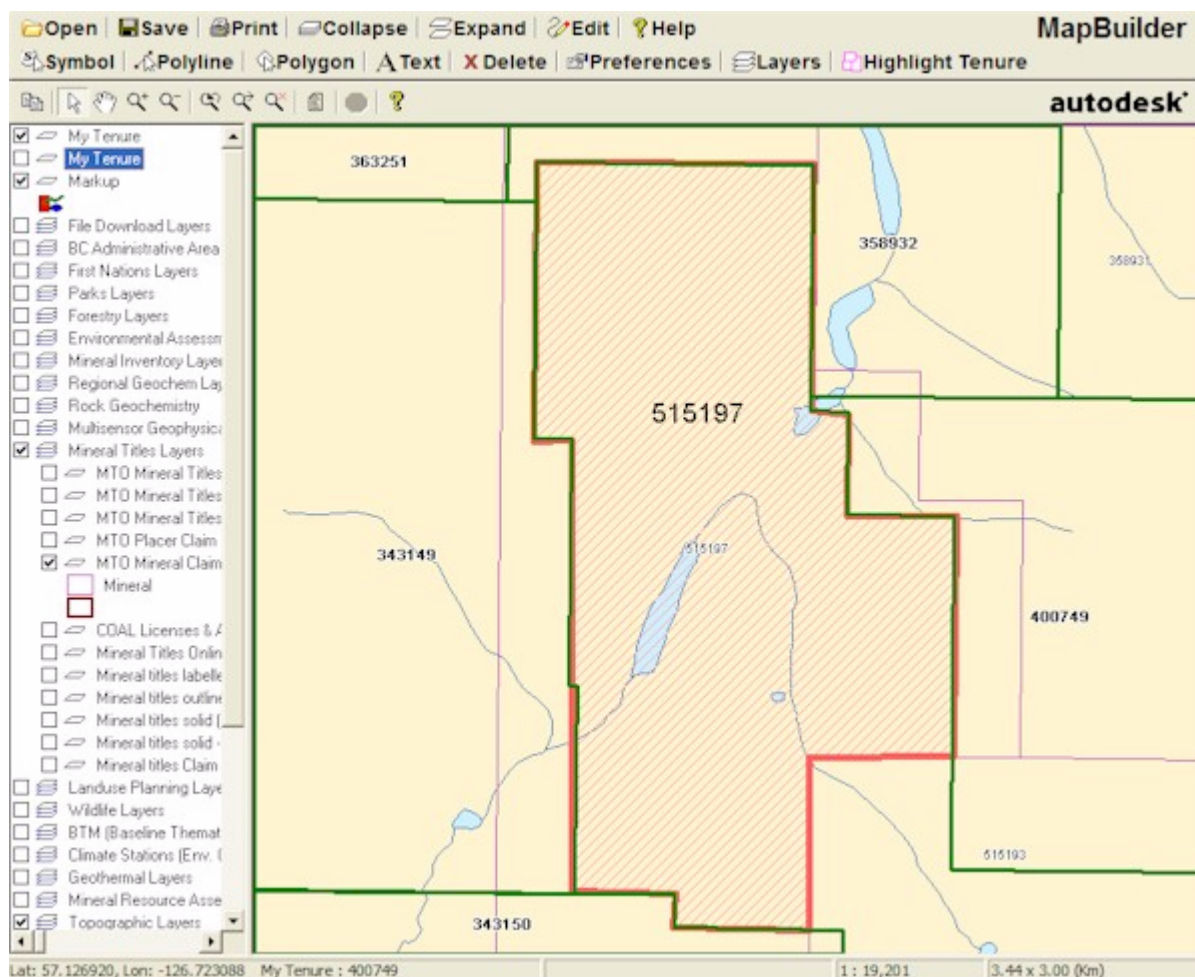
## Exercise 9b:

# MapBuilder

As a complement to the [ARIS MapBuilder](#), the **MapBuilder Map** can be used to quickly create and mark-up claim location maps, by annotating the maps with symbols, lines, polygons and text. Markup preferences can be modified to define the colour, size and style of markup features added. Layers can be moved and deleted. The Highlight Tenure button allows a customized tenure layer to be built. The modified map can be saved and opened and edited later.

**Note:** MTO tenures (numbers 500000 and above) may mask older tenures and Crown grants, which may still be valid. Thus MTO tenure outlines may have to be adjusted to exclude these areas. The [MapBuilder Map](#) can be used to custom annotate claim boundaries.

Use the MapBuilder to custom annotate claim boundaries similar to the image below.



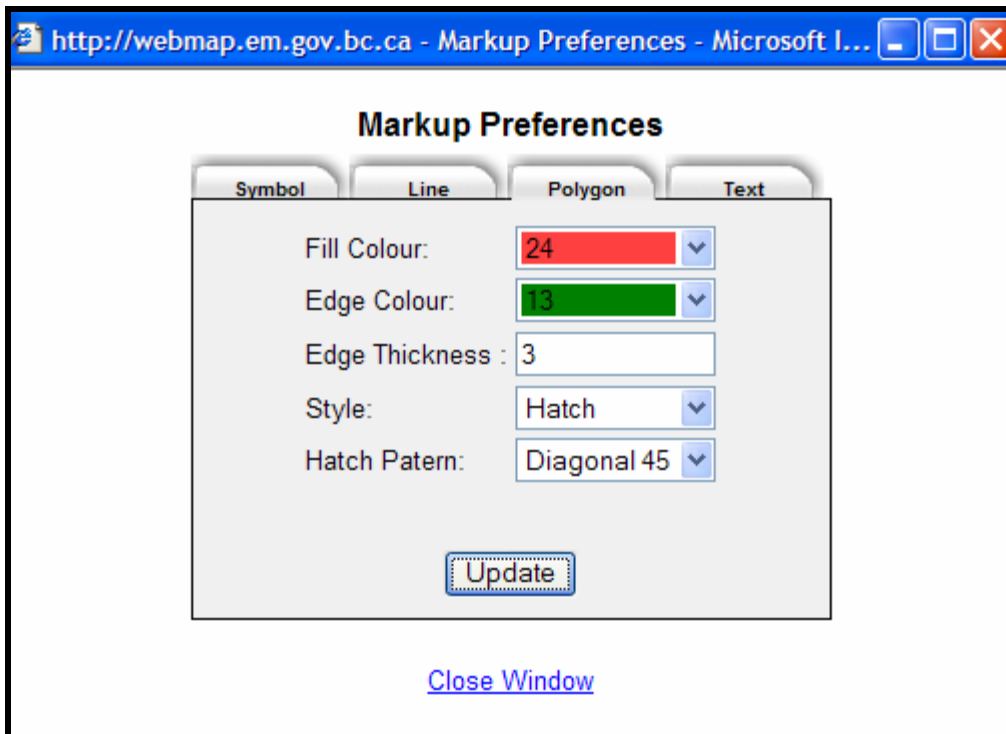
Zoom Goto 5151987

Turn on Mineral Titles Layers group and use MTO Mineral Titles Online Polygons and MTO Mineral Titles Online Labels; other topographic layers can also be turned on.

Use the Select tool to investigate claims less than 500000.

Select the Edit button to toggle the Markup tools on.

Use Preferences > Polygon to Update the Markup



Click the Polygon tool and draw lines around the 515197 claim, excluding tenures less than 500000. Double click to complete the polygon.

If you make a mistake, select the polygon, Delete and try again.

Try the other tools; see Help on their use.

The Highlight Tenure tool can be used if tenures do not overlap.


### MapBuilder Help

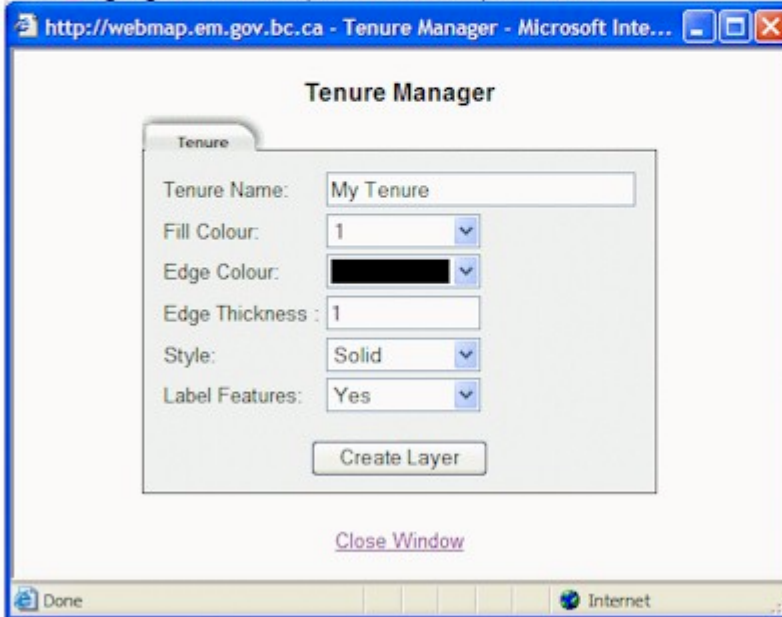
Click on a tool to see help for that item.

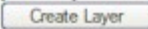


### Highlight Tenure

Displays the Tenure options and allows you to build a customized tenure layer.

1. Select tenures from one of the MTO layers on the map
2. Click  **Highlight Tenure** to open the Tenure Options window



3. Enter a name for the tenure selection in the Tenure Name field
4. Modify the style for the tenure layer
5. Click  to build a customized tenure layer

Questions?