

Create a Property Map with Mineral Titles

Exercise 8:

This exercise will create a map highlighting claims from an owner.

Step 1: Create Property Map

Click on 'Main Maps' on MapPlace home page. Open map theme map 'Exploration Assistant'.

Zoom to Stewart, at about 1:500K scale or 100 km map width.

Select the Mineral Title tool, enter Tenure Owner ID **200071** and click Submit.

Turn on layers

BC Communities

Significant Roads

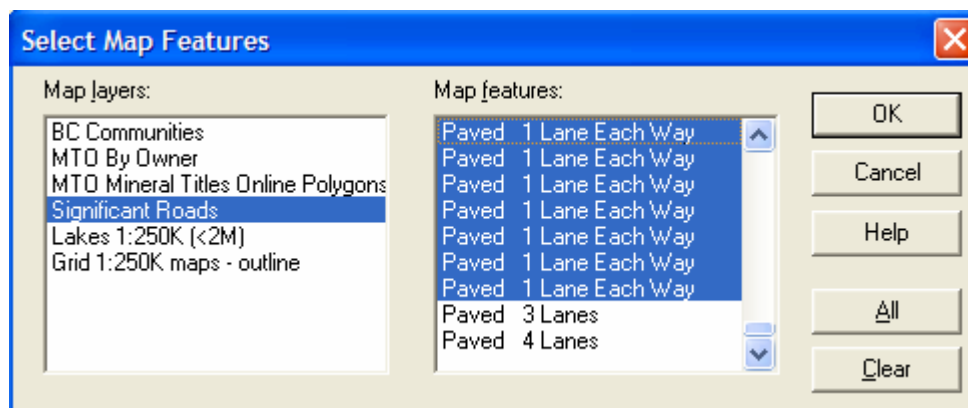
Rivers 1:250K (<2M)

Lakes 1:250K (<2M)

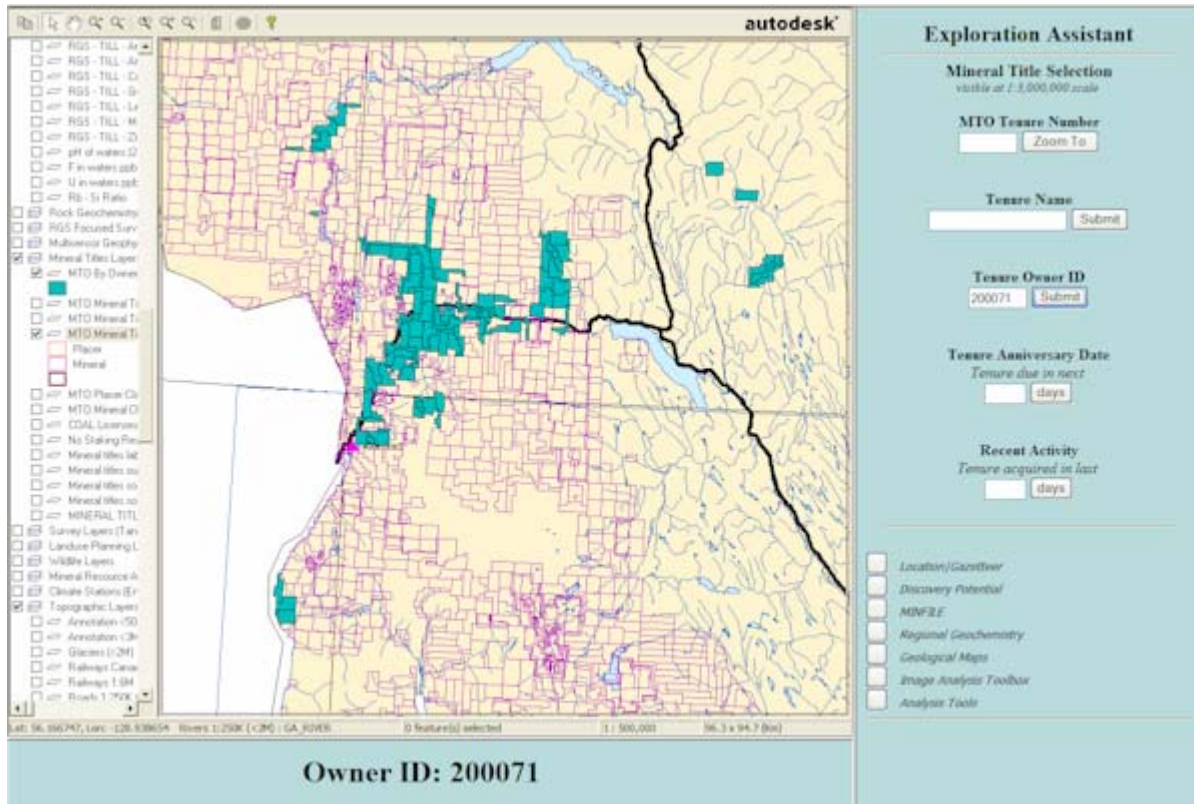
MTO Mineral Titles Online Polygons

Now we will highlight the road by building a buffer.

Right-click the map, Select > Select Map Objects and choose Significant Roads. In Map features, find and click the top 'Paved 1 Lane Each Way' and use the slider to go down to the last 'Paved 1 Lane Each Way'; select this one with Shift-click. Click OK.

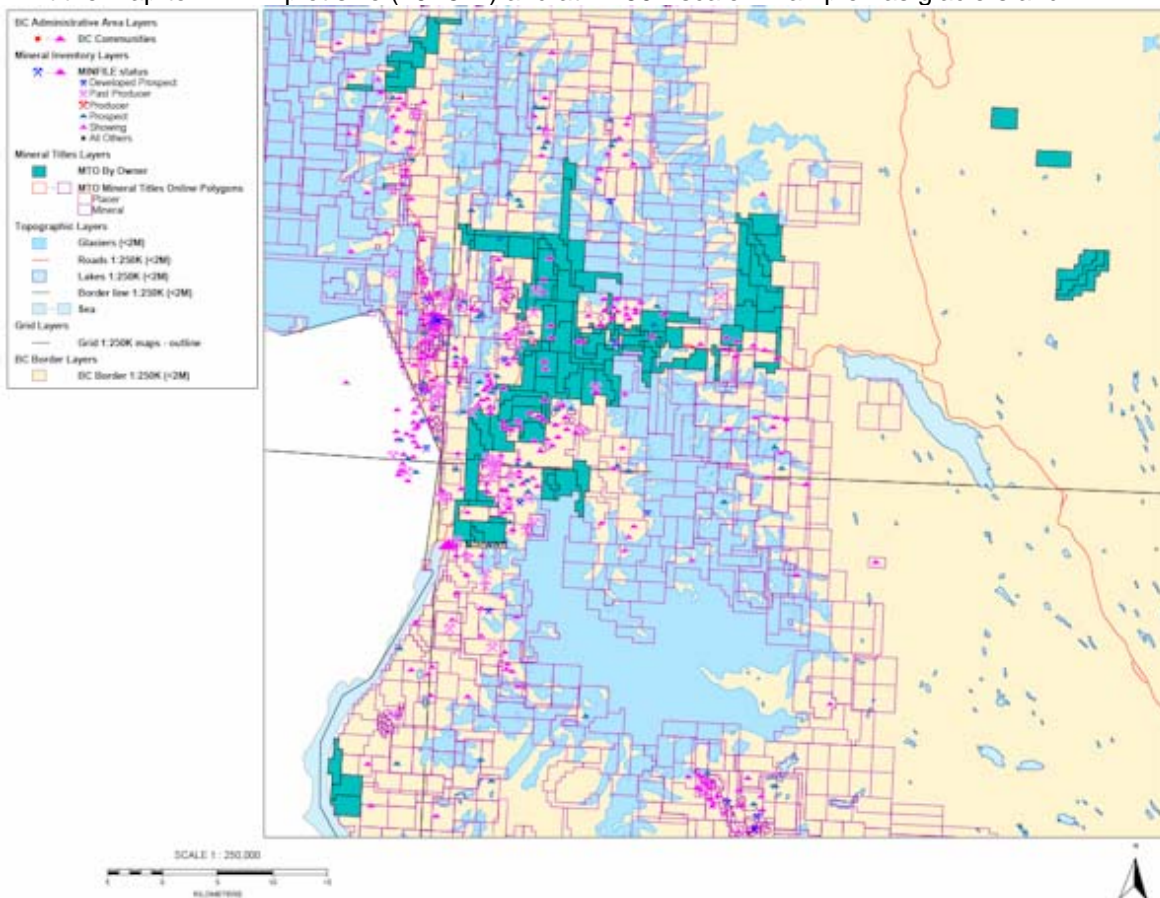


Right-click the map, View > View Buffer and offset by 0.1 Km, with Thickness 3. Leave default black for colour.

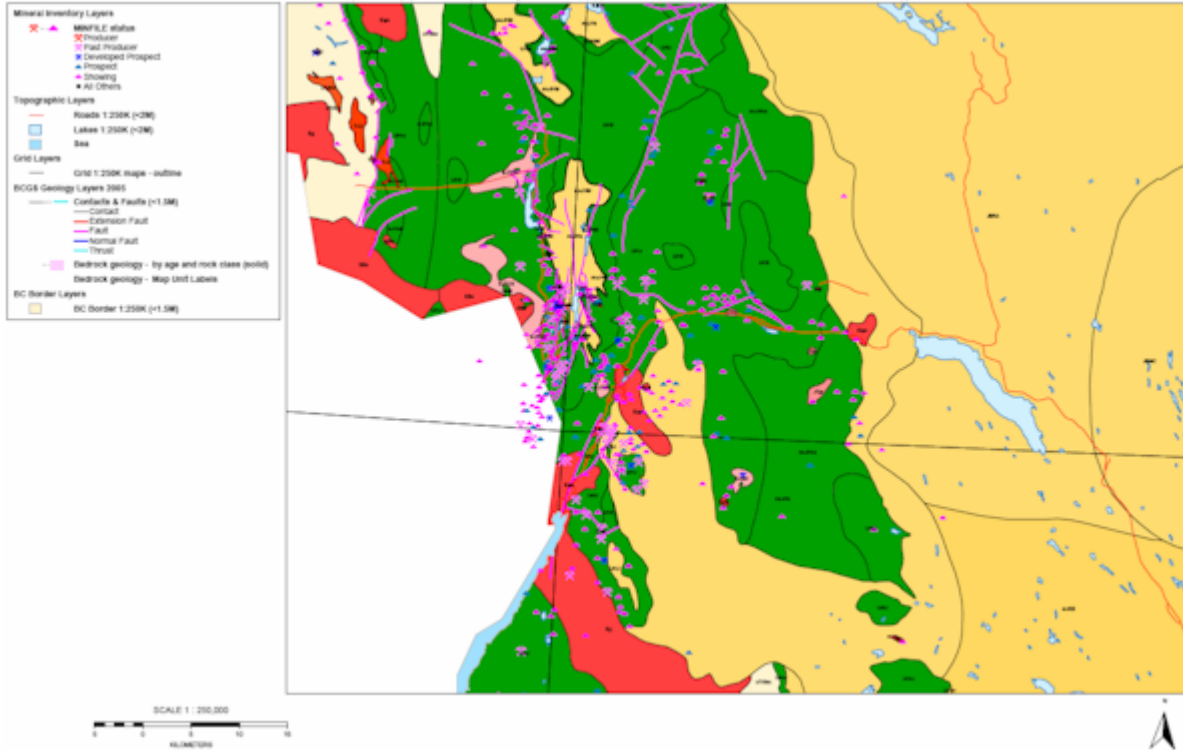


Add Bookmark as 200071 so you can return to this view. Note the layers will have to be turned on again.

Print the map to PDF in plot size (20X5 in) and at 1:250K scale. Example has glaciers and MINFILE.



Step 2: Create Geology Map and Legend



Geology Legend

Bounding Box: North: 56.420 South: 55.753 West: -130.375 East: -128.978
 NTS Map sheets: 103P, 104B, 103O, 104A

Eocene

- Efp feldspar porphyritic intrusive rocks
- EBo Boundary Stocks: granodioritic intrusive rocks

Coast Plutonic Complex(?)

- Eg intrusive rocks, undivided
- Egm quartz monzonitic intrusive rocks

Jurassic to Tertiary

- JTfp feldspar porphyritic intrusive rocks
- JTgr granite, alkali feldspar granite intrusive rocks
- JTH Howison Monzonite: quartz monzonitic intrusive rocks

Middle Jurassic to Late Cretaceous

Bowser Lake Group

- mJKB undivided sedimentary rocks

Middle Jurassic to Upper Jurassic

Howson Group

- msJHca calc-alkaline volcanic rocks
- msJHM Mount Dillworth Formation: calc-alkaline volcanic rocks
- msJHs undivided sedimentary rocks

Middle to Upper Jurassic

Bowser Lake Group

- JBMC Muskaboo Creek Assemblage: sandstone, siltstone, conglomerate
- JBRA Rierkie-Alger Assemblage: sandstone, siltstone, rare conglomerate

Middle Jurassic

Howson Group

- mJHsb basaltic volcanic rocks

Early Jurassic

- EJEK Eskay Porphyry, Kaipple Porphyry or Inel Stock: feldspar porphyritic intrusive rocks

Step 3: Create Project Area

Zoom to claim 525949

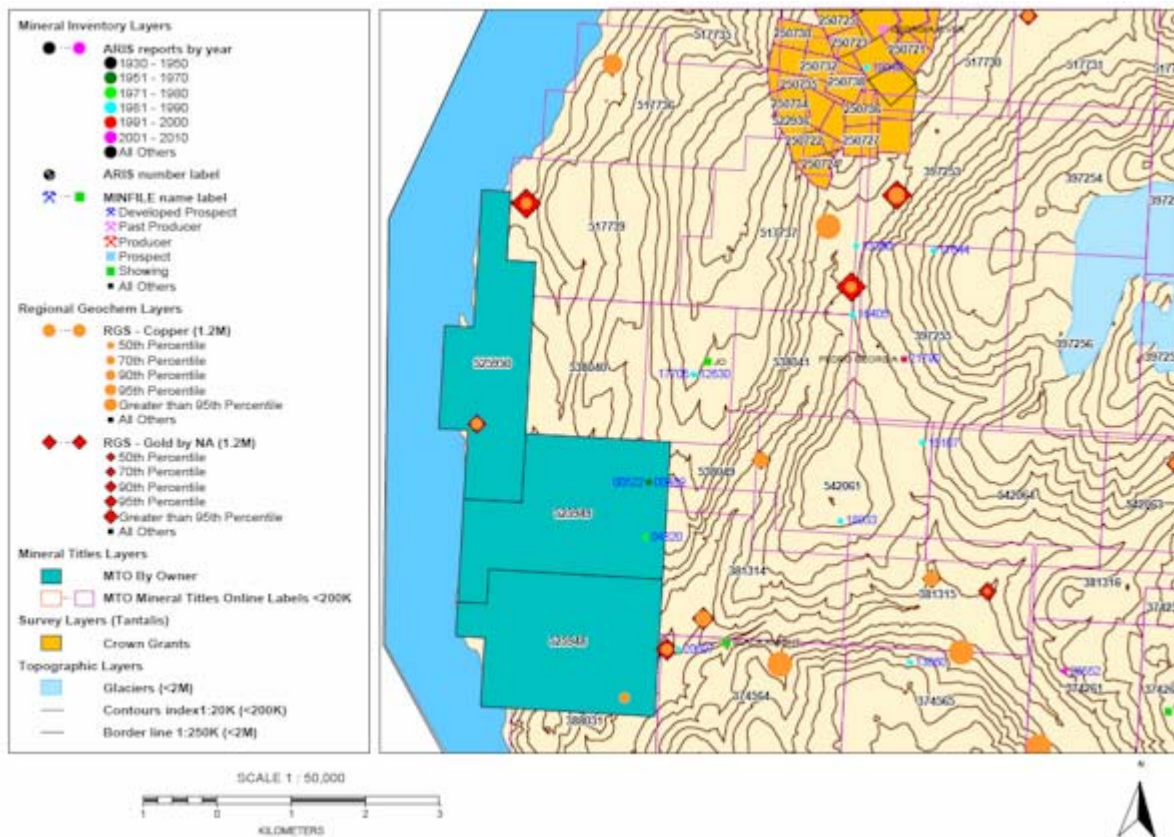
Zoom to Scale 1:70000.

Turn on Survey Layers (Tantalis); Crown Grants are defaulted on.

Turn on MINFILE and ARIS.

Use the Geochemistry tools to show Copper and Gold

Print to PDF with Scale 1:50,000

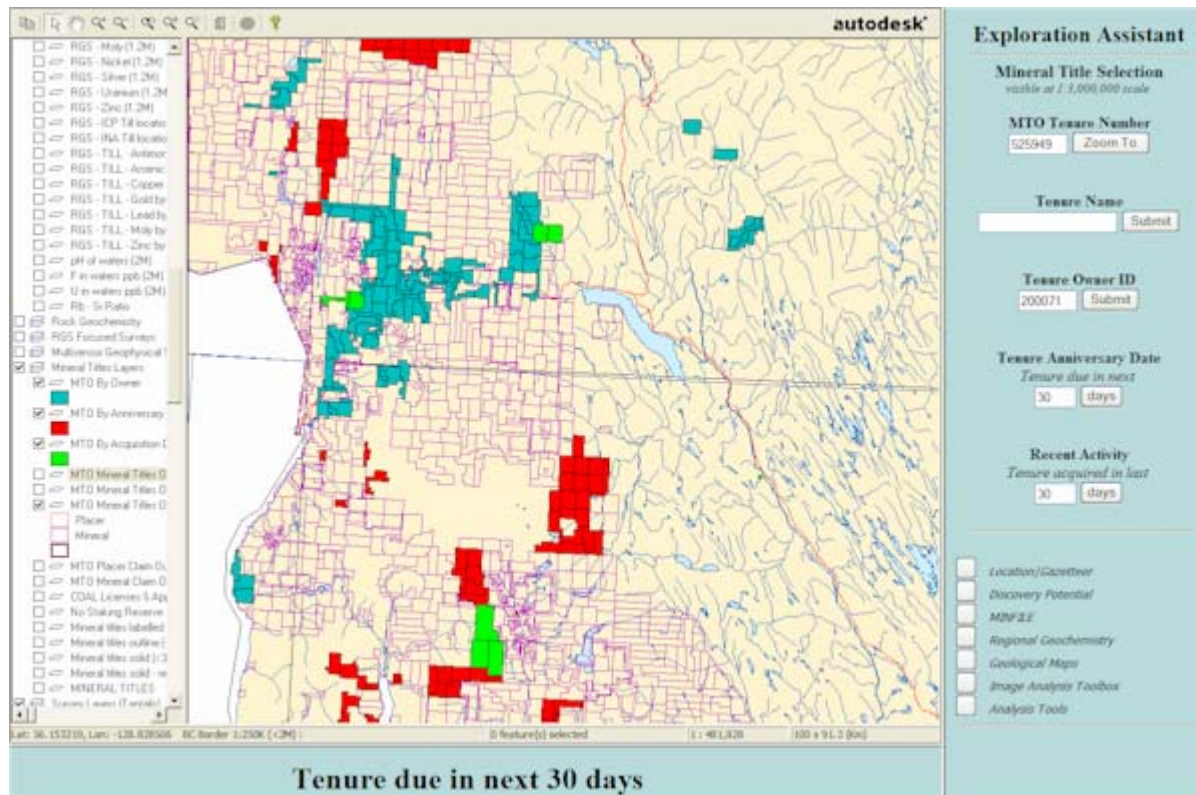


Create reports: MINFILE, ARIS, geochemistry downloads.

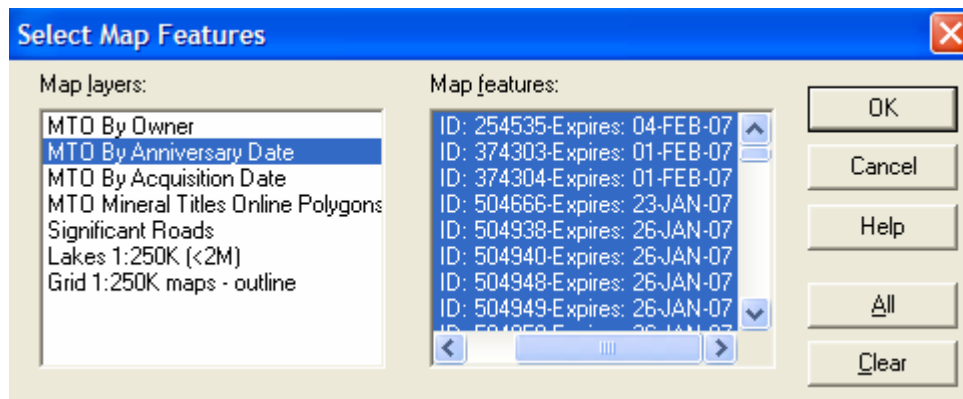
Step 4: Investigate Mineral Tenure staking

Select Bookmark 200071

Show Tenure due in next 30 days and Tenure acquired in last 30 days.



Select Map Features - MTO By Anniversary Date and By Acquisition Date.



Create reports on the tenures. Sort by Good Until. Note that headings can be used to sort.

Mineral Titles Online Report

Click on Tenure Numbers for more information.

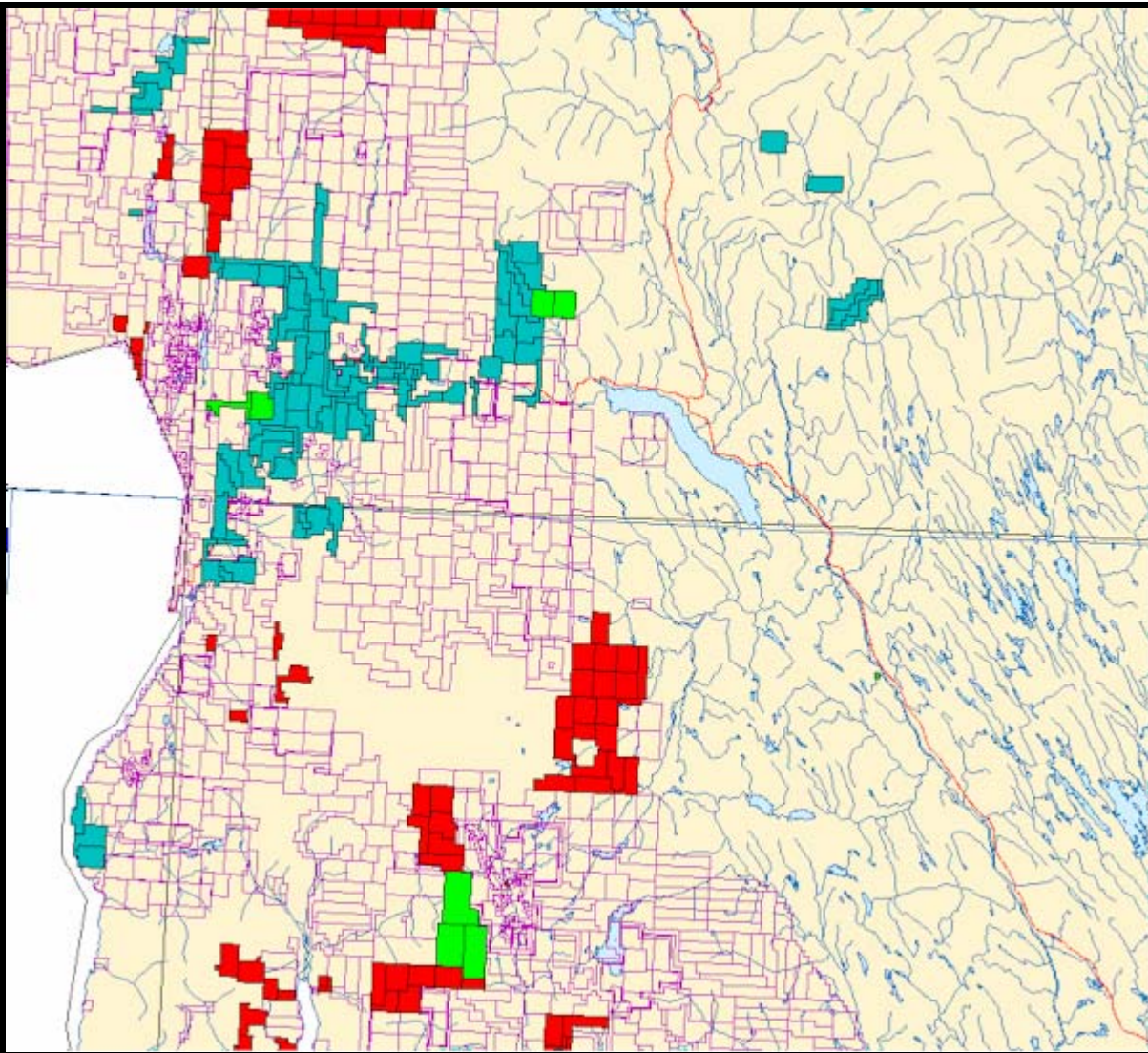
Click column headings to sort results.

[Download to Excel](#)

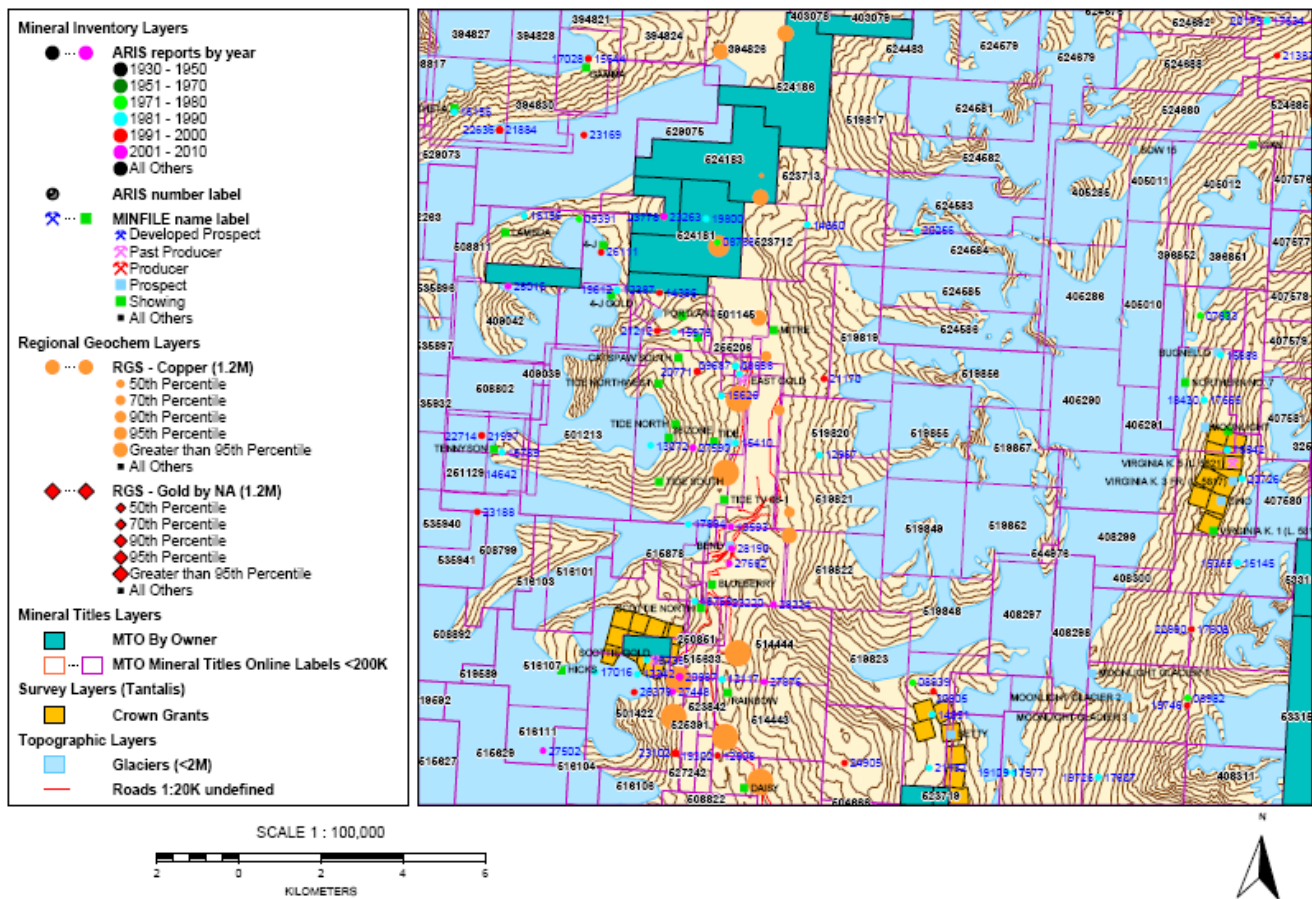
Tenure Number	Type	Claim Name	Good Until	Area (ha)
524975	Mineral	BOWSER 15	20070109	448.037
524973	Mineral	BOWSER 14	20070109	430.029
524971	Mineral	BOWSER 13	20070109	447.76
524970	Mineral	BOWSER 12	20070109	447.521
524980	Mineral	BOWSER 18	20070109	447.522
524968	Mineral	BOWSER 10	20070109	429.659
524967	Mineral	BOWSER 9	20070109	447.808
524976	Mineral	BOWSER 16	20070109	447.761
524978	Mineral	BOWSER 17	20070109	447.521
524969	Mineral	BOWSER 11	20070109	447.314
525021	Mineral	ICE BEAR 7	20070110	216.58
525052	Mineral	BOWSER 20	20070110	430.016
525054	Mineral	BOWSER 21	20070110	447.765
525056	Mineral	BOWSER 22	20070110	447.524
525060	Mineral	BOWSER 23	20070110	447.348
525062	Mineral	BOWSER 24	20070110	447.526
525064	Mineral	BOWSER 25	20070110	447.77
525065	Mineral	BOWSER 26	20070110	447.54
525066	Mineral	BOWSER 27	20070110	447.77
524983	Mineral	BOWSER 19	20070110	447.763
525067	Mineral	BOWSER 28	20070110	447.678
525088	Mineral	KS SOUTH 1	20070111	453.716
525068	Mineral	BOWSER 29	20070111	447.518
525090	Mineral	K SILVER SE	20070111	453.929
519840	Mineral		20070112	1190.225
519839	Mineral		20070112	1190.23
525133	Mineral	KS5	20070112	453.895
525134	Mineral	FLAT 1	20070112	454.04
525135	Mineral	FLAT 2	20070112	454.133
525136	Mineral	FLAT 3	20070112	435.986
525137	Mineral		20070112	272.558
525138	Mineral	FLATTY	20070112	436.007
525139	Mineral	FLATTER	20070112	453.727
525140	Mineral	FLATTERY	20070112	453.878
525141	Mineral	FLATTENED	20070112	453.829
525131	Mineral	KS 3	20070112	435.343
525132	Mineral	KS 4	20070112	453.735
525438	Mineral	MARMOT GOLD 2	20070114	145.366
525431	Mineral	MARMOT GOLD 1	20070114	108.871
525526	Mineral	MARMOT GOLD 4	20070115	417.568
525524	Mineral	MARMOT GOLD 3	20070115	181.328
504666	Mineral	kicker	20070123	432.159

Step 5: **Copy and paste the map in PowerPoint or Word.**

Use Copy button or right-click map, Copy > Copy (to clipboard). Go to application and paste. Note PowerPoint needs to be open before the copy.



Step 5: For a challenge try to create this view:



Questions?