

Intermediate Guide to MapPlace



Larry Jones
MapPlace & Geoscience Databases

Pat Desjardins
Corporate GIS

Gib McArthur
Manager, Resource Information

Kirk Hancock
MINFILE Geologist

Ward Kilby
is acknowledged as contributing developer of MapPlace



Workshop Agenda



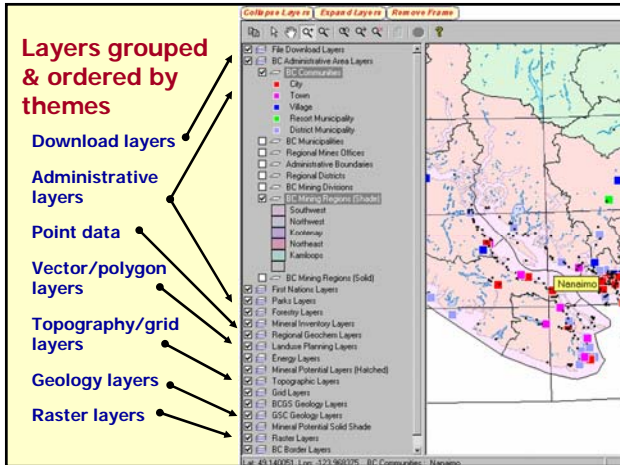
- MapPlace Website
- Organization of Data
- Breakdown of Tools
- Exercises:
 - Buffers
 - Copy and Paste
 - Exploration Assistant
 - Mineral Titles
 - Property Research
- Summary
- Questions & Desktop Prospecting

.... with Examples, Tips & Tricks

Exercise #1 – MapPlace Website

1. **Open** Internet Explorer
2. **Open** the MapPlace website:

<http://www.mapplace.ca>
3. **Examine** the left hand navigation bar and the links to data
4. **Investigate** Available & Theme Maps
5. **Open** the [BCGS Geoscience Map](#) and use tools to zoom and add layers



Exercise #2 – Layers and Groups


1. **Refresh** your [BCGS Geoscience Map](#), by using your BROWSER REFRESH toolbar button.
2. **Select** or 'turn on' the MINFILE as Developed Prospect layer. What Layer **Group** is the MINFILE as Developed Prospect located?
3. **De-select** this Group. What happens to the MINFILE as Developed Prospect layer? Now turn this Group back on.
4. **Double click** on the Group Title. What happens to the layers of this group? Try collapsing and expanding other groups.
5. **Hold the Ctrl** key while left clicking the layer names Volcanoes, Earthquakes and Geothermal Hotspots, release the Ctrl key and left click in one of the selected layer boxes. How many layers appear at the same time? Try this in reverse.

Tip #1

If you are going to ZOOM IN to an area, downloading time can be reduced if you turn on the desired layers after ZOOMING into an area.

The same idea applies when you ZOOM OUT of an area. Except this time turn off the layers before you ZOOM OUT.

Toolbar Buttons



Allows users to:

- **COPY** the current map view to the clipboard
- **SELECT** features
- **PAN** or slide the map around to display areas outside the current view
- **ZOOM** to an area that is user defined either by a centre point or a rectangle
- **ZOOM OUT** from the area defined by a centre point
- **ZOOM PREVIOUS** view that was just displayed
- **ZOOM GOTO** a specified location
- **UNZOOM** to display the full extents of the map
- **VIEW REPORTS** associated with the selected map objects
- **STOP** or interrupt the updating of the map display
- **HELP** to link to the Autodesk MapGuide Viewer Help Website

The Popup Menu Provides Additional Features to the [Toolbar Buttons](#)

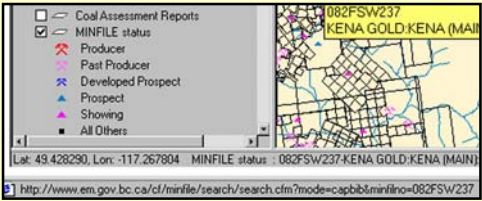
Additional features include:

- **ZOOM WIDTH** user-defined map width at the place of a cursor
- **ZOOM SCALE** user-defined map scale view
- **BOOKMARKS** to add & delete bookmark names for displayed map views
- **SELECT** criteria, such as **OBJECTS**, **RADIUS**, **POLYGON**, & **WITHIN** specified map objects
- **VIEW DISTANCE** between two or more locations; & **BUFFERS** allows users to create their own buffers around selected objects
- **ABOUT PREFERENCES** allows users to choose the type of map units (Metric or USA units) & coordinate system (latitude & longitude or mapping coordinate system) to be displayed on the map

Tip #2 - Viewing Coordinates

Try this:

- Place your cursor over the object, the coordinates of a location appears in the lower left hand corner of the screen.



- To change or to display the coordinate system use the popup menu and click **ABOUT** and then **PREFERENCES**. Here you can choose the type of units you would like to display.

Check report to display the Geographic Location of a point

Exercise #3 – Basic Tools

1. **Refresh** your [BCGS Geoscience Map](#), by using right-click, Reload.
2. Right click on the map and click **About** → **Preferences**, select METRIC from the Map Units menu and click OK.
3. **Use** the **Zoom GoTo** feature and select BC Locality under the CATEGORY drop down menu, Enter Nanaimo under LOCATION and 30km under ZOOM TO WIDTH. Select Nanaimo as the location in the pop-up box.
4. **Now** select the BC Communities layer to see Nanaimo (located in the centre of your screen)

Tip #3

- Consult the [Frequently Asked Questions](#) (FAQ) on the MapPlace. You will probably find your question answered here.

Now check it out!

1. Go to the MapPlace home page
2. Open [Frequently Asked Questions](#) link
3. Browse through some of the questions

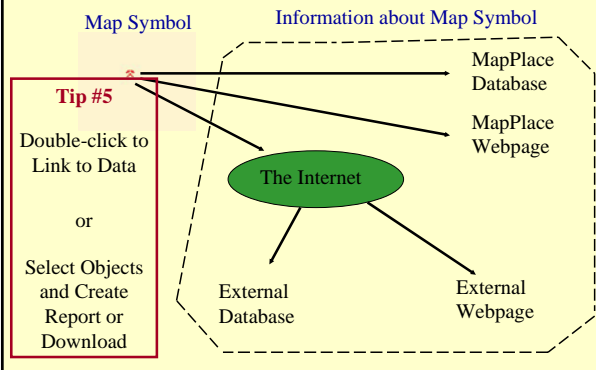
Trick #4 – Multiple Browsers

- Run another browser session to have two or more maps available.
- Use a second browser session as an additional research window or report session, such as the MINFILE database.
- *Note: only one map can be viewed with the Internet Mapping Sites such as Mineral Titles Online. Also be aware of time outs.*

Exercise #4 – Buffers

1. Refresh your map. Use **Zoom->Zoom Goto** to BC Locality 'Little Fort' (use 100 km for zoom width). Turn on the [BC Communities](#), [MINFILE Status](#), [ARIS Report by year](#) and [Bedrock Geology - by age & rock class \(solid\)](#) under the BCGS Geology Layers 2005 group. Pan to center the Cretaceous pink pluton to the east.
2. Select the Baldy Batholith, right click and select **View->Buffers** from the PopUp Menu.
3. Enter a buffer distance of 1 km, color red, thickness 2. In the map window select the buffer polygon, right click and select **Select->Select within existing polygons** from the popup menu. Choose [ARIS Report by year](#) and click OK. View ARIS Data report.

Linking Data on the Map



Exercise #4a – Buffers continued

4. Bookmark this map and call it 'Baldy Batholith'.
5. Turn off the buffer layer.
6. How far is the showing from Kamloops? (HINT: turn on BC Communities and Pan map to the north, or zoom out.)
7. Open the bookmark 'Baldy Batholith'. Using **PAGE SETUP** in the popup menu, change the title of the map to read '*Baldy Batholith Area*'. Make sure the legend, north arrow, URL and scale are selected, but deselect time and date. Specify the scale in Map size to 1:1,300,000. Press OK.
8. Print the Map.

Try your own Buffer Exercises

Trick #6 – Print Digital Map & Legend

- Digital printing can be accomplished using a PDF writer or Microsoft Document Image Writer
- Use Acrobat PDF Writer driver to produce a PDF file with the legend and map. Use the Text or Graphic Select Tool to capture the legend or map.
- Legend size can be controlled by collapsing or expanding layers in the map legend.

Check our website for links to other PDF Writers

Trick #7 – Obtain UTM Coordinates

- Use the Transverse Mercator projection maps to get UTM coordinate readouts from the cursor position; set your Preferences to Map Coordinates.
- A 1-metre UTM Grid is available in all maps.
- UTM maps are available in the Main Maps page or link through the "Geology Download _TM Proj." layer under the File Download Layer group.

Tip #8 – First Nations Contacts

- Turn on Aboriginal Communities in First Nations Layers.
- Double-click link to First Nation Profiles on DIAND.

First Nation Detail

Deekyarus

Official Name: Deekyarus
Number: 666
Address: BOX 795, 1334 PINE ST, ULLARLEY, BC
Postal Code: V0R 2A0
Phone: (250) 726-4298
Fax: (250) 726-4403
Website: [Aboriginal Canada Portal](#)

To see additional details, please select one of the following:

Reserve/Settlement	Governance	Census Statistics
Geography	Registered Population	Complete Profile
Federal Funds		

Tribal Council affiliated with this First Nation
1075 1623-CHIMHEALTH TRIBAL COUNCIL

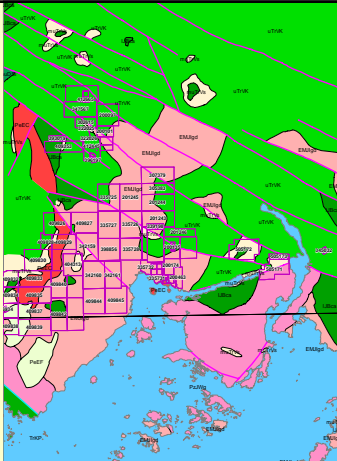
Exercise #5 – Copy and Paste

1. Return to the Baldy batholith
2. Turn on layers [Bedrock geology – by age and rock class \(2005\)](#) and [Faults \(<1.5M\)](#) under group BCGS Geology Layers 2005, [Roads 1:250K \(<2M\)](#), [Lakes 1:250K \(<2M\)](#), [Rivers 1:250K \(<2M\)](#), [MTO Mineral Titles Online Polygons](#)
3. Open up PowerPoint and copy current map view, EDIT → PASTE. Experiment by adding any symbols or text to the map.

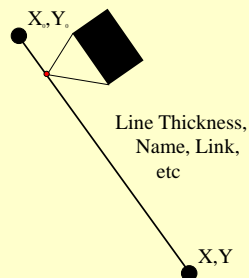
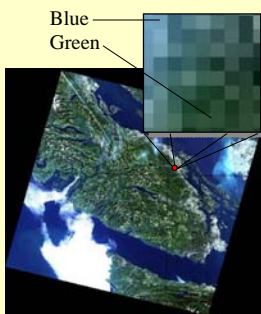
Try Print a Map to Scale in Workshop Notes

Tip #9 - Ungroup

- Change pasted image to Microsoft Office drawing object in PowerPoint.
- Right-click, Grouping, Ungroup; again.
- Does not work well with hatched or shaded objects.



Rasters and Vectors



Download Files Available

- **Download layers at the top of the legend:**



- Mineral Potential, Geology Legend, Map Indexes
- RGS, MINFILE, ARIS, COALFILE, PNG Wells
- Most of the maps in MapPlace contain these downloads

Tip #10 - Downloads

- Download free BC geoscience data in various formats (SHP, dbf) from our [Geospatial Download](#) page. Themes include [Digital Geology Map of BC](#), [MINFILE](#), [ARIS](#), and [RGS](#).
- The [Links to Data and Maps](#) page link various data sources from federal, provincial, commercial and university organizations.
- The [GeoBase Portal](#) provides access to Canadian geospatial data, including: road network, landform/topography, place names, administrative boundaries and satellite imagery.

Exploration Assistant

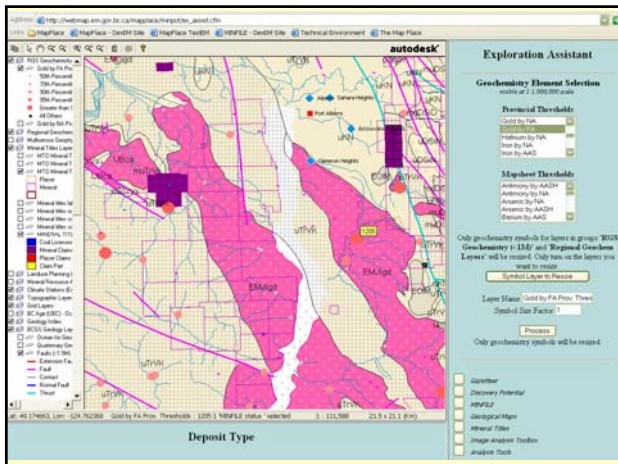
- Display query results on the map, such as:
 - [Gazetteer](#) to find location
 - [Discovery Potential](#): where Mineral Resource Assessment program predicted new deposits of specific types will be found
 - [MINFILE](#) by commodity or deposit type or name
 - [Regional Geochemistry](#) by provincial or map sheet threshold
 - [Geology](#) by age, lithology and terrane
 - [Mineral Titles](#) by claim name and anniversary date

Exercise #6 – Exploration Assistant

Open the [Exploration Assistant](#)

1. Use ZOOM GOTO, BC Communities, Port Alberni, with a zoom to width of 100km.
2. Query Geology with Jurassic age rocks with a volcanic lithology of any terrane.
3. Select Mineral Titles query and enter Claims due in next 30 days.
4. Select Gold by NA in Geochemistry query.
Note the 1205ppb sample south of Port Alberni

Investigate other Analysis Tools in Workshop Notes



Trick #11 – Zoom To Lat/Long

- A map can be opened centered on a geographic coordinate using URL parameters.
- Right-click the map, select Copy as Bookmark, paste into the URL bar in the browser window. Edit the LAT & LON coordinates & WIDTH. Press enter.
- The map will redraw to the specified location and scale, with only default layers turned on.

Check URL Parameters in Advanced Topics

Exercise #7
Use MapperWrapper to Move Layers

- Open a MapperWrapper Map.
- Enter the layer label in the Active Layer Name.
- Change the Layer Priority.
- This MWF map can also be used to enter URL parameters.

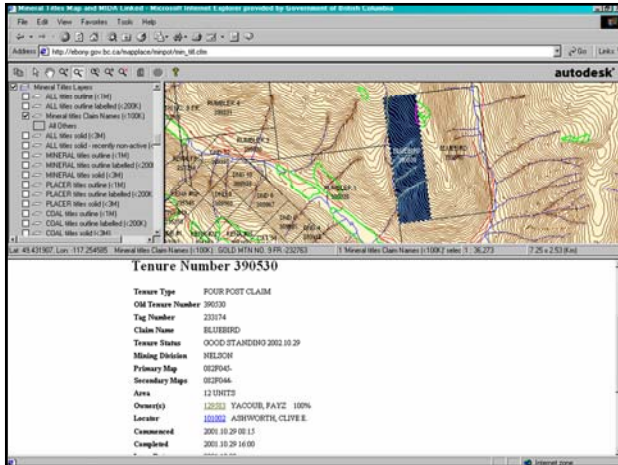
More on the MapperWrapper in Workshop Notes

Mineral Titles Map

- **Mineral, Placer** and **Coal tenure layers** are unique layers to this map and can be viewed at a scale of 1:3,000,000 or less.
- This map is viewed along with an additional window frame to allow users to conduct a number of Mineral related searches.
- Quick access to Titles maps in PDF format through the 'Mineral Titles PDF 1:250K Grid' in the File Download Layers group.

Exercise #8 – Mineral Titles

1. Open the [Mineral Titles Map](#) & enlarge the bottom window.
2. Review the Mineral Title Related searches; search on the Marcia claim.
3. Use the **ZOOM GOTO** feature, in **Category** choose MTO Tenure Number, in Location type in **516514**, then click OK.
4. Turn on the MTO Mineral Titles Online Labels layer.
5. Use the Ctrl key to multiple select TRIM layers then toggle on.
6. Double click on the Mineral Tenure **516514**, to view a report in the bottom frame.



Exercise #9 - Researching a Property

1. Right-click on map and click [Zoom -> Zoom Goto](#). In Category select 'MINFILE Name', type 'Merry Widow' in location; Zoom to Width '12km'
2. Turn on Mineral Inventory Layers: [ARIS report by year](#) and [MINFILE Status](#); and Mineral Titles Layers: [MTO Mineral Titles Online solid](#).
3. Turn on [BCGS Geology Layers 2005](#).
4. Investigate [Reports](#) and [Downloads](#).

Optional Exercises:

- Using the CGKN Data Catalogue
- Links to Data Downloads
- Resize Geochemistry Symbols
- Crown Grant Raster Downloads and Link to Mineral Titles PDF Maps
- Copy & Paste from MapPlace with Scale Preservation
- How do I use Rivers with Reports

Summary

➤ In this workshop you have completed the following:

- Aware of available maps & data
- Used all the accessing tools
- Discovered the depth of data available
- Created and copied maps
- Accessed linked reports and downloads
- Enhanced your researching ability
- Found solutions
- On the way to finding a deposit

And much more!

Questions??

*Now you are ready to
Find Your Exploration Targets!*



Thank you for your time!
